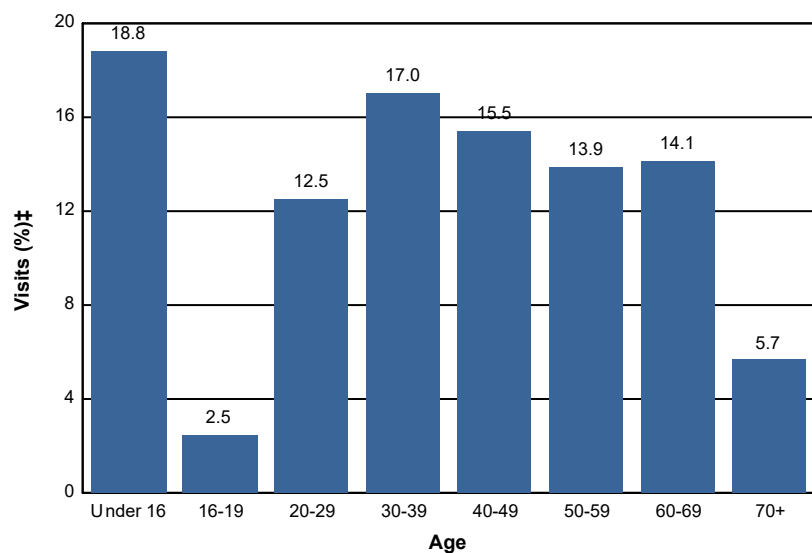


Age

Percent of National Forest Visits* by Age

Age Class	National Forest Visits (%)‡
Under 16	18.8
16-19	2.5
20-29	12.5
30-39	17.0
40-49	15.5
50-59	13.9
60-69	14.1
70+	5.7
Total	100.0



Selected Subunits:

Nantahala-Pisgah NFs (National Forests in North Carolina) (FY 2018)

* A National Forest Visit is defined as the entry of one person upon a national forest to participate in recreation activities for an unspecified period of time. A National Forest Visit can be composed of multiple Site Visits.

† Non-respondents to age questions were excluded from analysis.

‡ Calculations are computed using weights that expand the sample of individuals to the population of National Forest Visits.