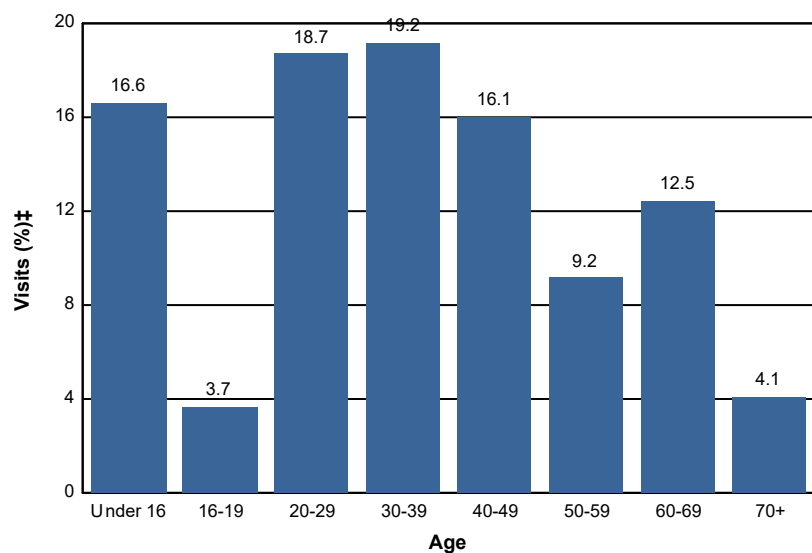


# Age

## Percent of National Forest Visits\* by Age

Age Class	National Forest Visits (%)‡
Under 16	16.6
16-19	3.7
20-29	18.7
30-39	19.2
40-49	16.1
50-59	9.2
60-69	12.5
70+	4.1
<b>Total</b>	<b>100.1</b>



**Selected Subunits:**

Mt. St. Helens NVM (Gifford Pinchot NF) (FY 2016)

\* A National Forest Visit is defined as the entry of one person upon a national forest to participate in recreation activities for an unspecified period of time. A National Forest Visit can be composed of multiple Site Visits.

† Non-respondents to age questions were excluded from analysis.

‡ Calculations are computed using weights that expand the sample of individuals to the population of National Forest Visits.