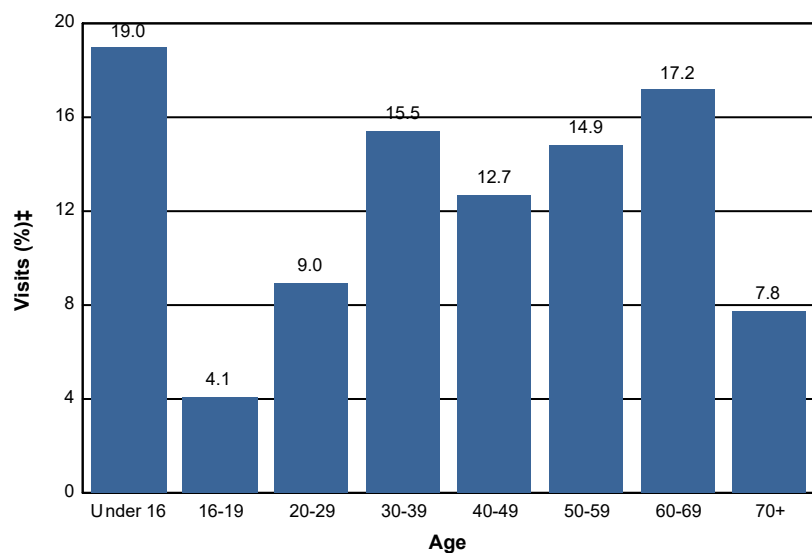


# Age

## Percent of National Forest Visits\* by Age

| Age Class    | National Forest Visits (%) <sup>‡</sup> |
|--------------|---|
| Under 16     | 19.0                                    |
| 16-19        | 4.1                                     |
| 20-29        | 9.0                                     |
| 30-39        | 15.5                                    |
| 40-49        | 12.7                                    |
| 50-59        | 14.9                                    |
| 60-69        | 17.2                                    |
| 70+          | 7.8                                     |
| <b>Total</b> | <b>100.2</b>                            |



|  |
|--|
| <b>Selected Subunits:</b>                        |
| Shasta-Trinity NRA (Shasta-Trinity NF) (FY 2018) |

\* A National Forest Visit is defined as the entry of one person upon a national forest to participate in recreation activities for an unspecified period of time. A National Forest Visit can be composed of multiple Site Visits.

† Non-respondents to age questions were excluded from analysis.

‡ Calculations are computed using weights that expand the sample of individuals to the population of National Forest Visits.