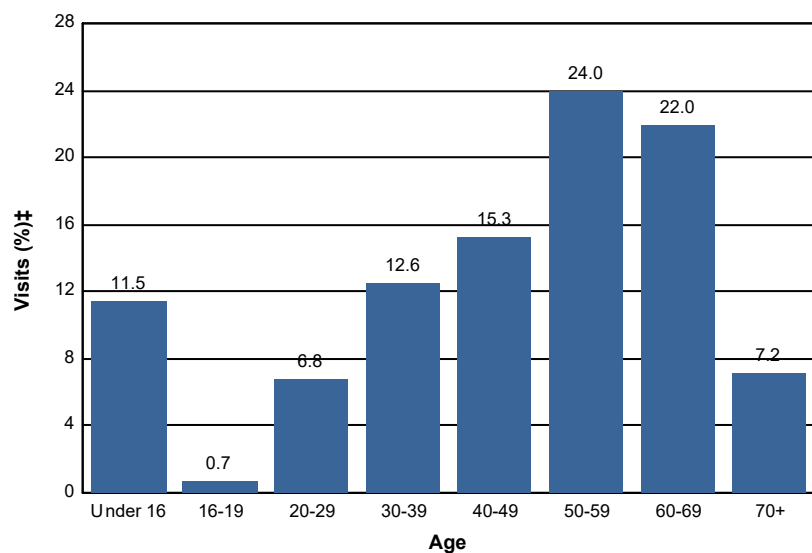


# Age

## Percent of National Forest Visits\* by Age

Age Class	National Forest Visits (%)‡
Under 16	11.5
16-19	0.7
20-29	6.8
30-39	12.6
40-49	15.3
50-59	24.0
60-69	22.0
70+	7.2
<b>Total</b>	<b>100.1</b>



<b>Selected Subunits:</b>
Sawtooth NRA (Sawtooth NF) (FY 2015)

\* A National Forest Visit is defined as the entry of one person upon a national forest to participate in recreation activities for an unspecified period of time. A National Forest Visit can be composed of multiple Site Visits.

† Non-respondents to age questions were excluded from analysis.

‡ Calculations are computed using weights that expand the sample of individuals to the population of National Forest Visits.