



United States
Department of
Agriculture

Forest Service

Natural Resource
Manager

National Visitor
Use Monitoring
Program



Last updated:
11 January 2025

Visitor Use Report

Tahoe NF

**USDA Forest Service
Region 5**

**National Visitor Use Monitoring
Data collected FY 2015**

CONTENTS

1. Introduction

- 1.1. Scope and purpose of the National Visitor Use Monitoring program
- 1.2. Methods
- 1.3. Definition of Terms
- 1.4. Limitations of the Results

2. Visitation Estimates

- 2.1 Forest Definition of Site Days
- 2.2. Visitation Estimates

3. Description of the Recreation Visit

- 3.1. Demographics
- 3.2. Visit Descriptions
- 3.3. Activities

4. Economic Information

- 4.1. Spending Segments
- 4.2. Spending Profiles
- 4.3. Total Direct Spending
- 4.4. Other Visit Information
- 4.5. Household Income
- 4.6. Substitute Behavior

5. Satisfaction Information

- 5.1. Crowding
- 5.2. Disabilities

6. Wilderness Visit Demographics

7. Appendix Tables

1. INTRODUCTION

1.1. Scope and purpose of the National Visitor Use Monitoring program

The National Visitor Use Monitoring (NVUM) program provides reliable information about recreation visitors to national forest system managed lands at the national, regional, and forest level. Information about the quantity and quality of recreation visits is required for national forest plans, Executive Order 12862 (Setting Customer Service Standards), and implementation of the National Recreation Agenda. To improve public service, the agency's Strategic and Annual Performance Plans require measuring trends in user satisfaction and use levels. NVUM information assists Congress, Forest Service leaders, and program managers in making sound decisions that best serve the public and protect valuable natural resources by providing science based, reliable information about the type, quantity, quality and location of recreation use on public lands. The information collected is also important to external customers including state agencies and private industry. NVUM methodology and analysis is explained in detail in the research paper entitled: Forest Service National Visitor Use Monitoring Process: Research Method Documentation; English, Kocis, Zarnoch, and Arnold; Southern Research Station; May 2002 (<http://www.fs.fed.us/recreation/programs/nvum>).

In 1998 a team of research scientists and forest staff developed a recreation sampling system (NVUM) that provides statistical recreation use information at the forest, regional, and national level. Several Forest Service staff areas including Recreation, Wilderness, Ecosystem Management, Research and Strategic Planning and Resource Assessment were involved in developing the program. From January 2000 through September 2003 every national forest implemented this methodology and collected visitor use information. This application served to test the method over the full range of forest conditions, and to provide a rough national estimate of visitation. Implementation of the improved method began in October 2004. Once every five years, each National Forest and Grassland has a year of field data collection.

This NVUM data is useful for forest planning and decision making. The description of visitor characteristics (age, race, zip code, activity participation) can help forest staff identify their recreation niche. Satisfaction information can help management decide where best to place limited resources that would result in improved visitor satisfaction. Economic expenditure information can help forests show local communities the employment and income effects of tourism from forest visitors. In addition, the visitation estimates can be helpful in considering visitor capacity issues.

1.2. Methods

To define the sampling frame, staff on each forest classify all recreation sites and areas into five basic categories called "site types": Day Use Developed Sites (DUDS), Overnight Use Developed Sites (OUDS), Designated Wilderness Areas (Wilderness), General Forest Areas (GFA), and View Corridors (VC). Only the first four categories are counted as national forest recreation visits and are included in the visit estimates. The last category is used to track the volume of people who view national forests from nearby roads; since they do not get onto agency lands, they cannot be counted as visits. For the entire sampling year, each day on each site was given a rating of very high, high, medium, low, or no use according to the expected level of recreational visitors who would be

observed leaving that location for the last time (last exiting recreation use) on that day. The combination of a calendar day and a site or area is called a site day. Site days are the basic sampling unit for the NVUM protocol. Results of this forest categorization are shown in Table 1.

In essence, visitation is estimated through a combination of traffic counts and surveys of exiting visitors. Both are obtained on a random sample of locations and days distributed over an entire forest for a year. All of the surveyed recreation visitors are asked about their visit duration, activities, demographics, travel distance, and annual usage. About one-third were also asked a series of questions about satisfaction. Another one-third were asked to provide information about their income, spending while on their trip, and the next best substitute for the visit.

1.3. Definition of Terms

NVUM has standardized measures of visitor use to ensure that all national forest visitor measures are comparable. These definitions are basically the same as established by the Forest Service in the 1970's. Visitors must pursue a recreation activity physically located "on" Forest Service managed land in order to be counted. They cannot be passing through; viewing from non-Forest Service managed roads, or just using restroom facilities. The visitation metrics are ***national forest visits*** and ***site visits***. NVUM provides estimates of both and confidence interval statistics measuring the precision of the estimates. The NVUM methodology categorizes recreation facilities and areas into specific site types and use levels in order to develop the sampling frame. Understanding the definitions of the variables used in the sample design and statistical analysis is important in order to interpret the results.

National forest visit is the entry of one person upon a national forest to participate in recreation activities for an unspecified period of time. A national forest visit can be composed of multiple site visits. The visit ends when the person leaves the national forest to spend the night somewhere else.

Site visit is the entry of one person onto a national forest site or area to participate in recreation activities for an unspecified period of time. The site visit ends when the person leaves the site or area for the last time on that day.

A ***confidence interval*** is a range of values that is likely to include an unknown population value, where the range is calculated from a given set of sample data. Confidence intervals are always accompanied by a ***confidence level***, which tells the degree of certainty that the value lies in the interval. Used together these two terms define the reliability of the estimate, by defining the range of values that are needed to reach the given confidence level. For example, the 2008 national visitation estimate is 175.6 million visits, with a 90% confidence interval of 3.2%. In other words, given the NVUM data, our best estimate is 175.6 million visits, and given the underlying data, we are 90% certain that the true number is between 170.0 million and 181.2 million.

Recreation trip is the duration of time beginning when the visitor left their home and ending when they return to their home.

Site day - a day that a recreation site or area is open to the public for recreation purposes.

Proxy - information collected at a recreation site or area that is directly related to the amount of

recreation visitation received. The proxy information must pertain to all users of the site and it must be one of the proxy types allowed in the NVUM pre-work directions (fee receipts, fee envelopes, mandatory permits, permanent traffic counters, group reservations, ticket sales, and daily use records).

Nonproxy - a recreation site or area that does not have proxy information. At these sites a 24-hour traffic count is taken to measure total use for one site day at the sample site .

Use level - for each day of the year for each recreation site or area, the site day was categorized as very high, high, medium or low last exiting recreation traffic, or no exiting use. No Use could mean either that the location was administratively closed, or it was open but was expected to have zero last exiting visitors. For example a picnic area may be listed as having no use during winter months (120 days), high last exiting recreation volume on all other weekends (70 days) and medium last exiting recreation use on the remaining midweek days (175 days). This accounts for all 365 days of the year. This process was repeated for every site and area on the forest.

1.4. Limitations of the Results

The information presented here is valid and applicable at the forest, regional, and national level. It is not designed to be accurate at the district or site level. The quality of the visitation estimate is dependent on the sample design development, sampling unit selection, sample size and variability, and survey implementation. First, preliminary work conducted by forests to identify and consistently classify sites and access points according to the type and amount of expected exiting visitation is the key determinant of the validity and magnitude of the visitation estimate. Second, the success of the forest staff in accomplishing its assigned set of sample days, correctly filling out the interview forms, and following the field protocols influence the reliability of the results, variability of the visitation estimate, and validity of the visitation descriptions. Third, the variability of traffic counts within a sampling stratum affects the reliability of the visitation estimates. Fourth, the range of visitors sampled must be representative of the population of all visitors. Finally, the number of visitors sampled must be large enough to adequately control variability. The results and confidence intervals will reflect all these factors.

Confidence intervals indicate the reliability of the visitation estimate, given the underlying data. Large confidence intervals indicate high variability in the national forest visit (NFV), site visit (SV) and Wilderness visit estimates. Variance is caused primarily by a small sample size in number of days or having a few sampled days where the observed exiting visitation volume was very different from the normal range. For example, on a particular National Forest in the General Forest Area low stratum, there were 14 sample days. Of these 14 sample days, 13 days had visitation estimates between zero and twenty. The remaining day had a visitation estimate of 440. So the stratum mean was about 37 per day, standard error was about 116, and the 90% confidence interval width is 400% of the mean. Causes for such outlier observations are not known, but could include a misclassification of the day (a high use day incorrectly categorized as a low use day), unusual weather, malfunctioning traffic counter, or reporting errors. Eliminating the unusual observation from data analysis would reduce the variability. However, unless the NVUM team had reason to suspect the observation was incorrect they did not eliminate these unusual cases.

The descriptive information about national forest visitors is based upon only those visitors that were interviewed. Every effort was made to incorporate distinct seasonal use patterns and activities that

vary greatly by season into the sampling frame. The sampling plan took into account both the spatial and seasonal spread of visitation patterns across the forest. Even so, because of the small sample size of site-days, or because some user groups decline to participate in the survey, it is possible to under-represent certain user groups, particularly for activities that are quite limited in where or when they occur.

Note that the results of the NVUM activity analysis DO NOT identify the types of activities visitors would like to have offered on the national forests. It also does not tell us about displaced forest visitors, those who no longer visit the forest because the activities they desire are not offered.

Some forest visitors were counted and included in the total forest use estimate but were not surveyed. This included visitors to recreation special events and organization camps. Their characteristics are not included in the visit descriptions.

Caution should be used in interpreting any comparisons of these results with those obtained during the 2000 - 2003 period. Differences cannot be interpreted as a trend. Several method changes account for the differences, for both visitation estimates and visit characteristics. One key factor is that the first application of the NVUM process was largely a national beta-test of the method, and significant improvements occurred following it. The NVUM process entailed a completely new method and approach to measuring visitation on National Forest lands. Simply going through the NVUM process for the first time enabled forest staff to do a much better job thereafter in identifying sites, accurately classifying days into use level strata, and ensuring consistency across all locations on the forest. These improvements enhanced the validity of all aspects of the NVUM results. Sampling plans and quality control procedures were also improved.

2. VISITATION ESTIMATES

2.1. Forest Definition of Site Days

The population of site days for sampling was constructed from information provided by forest staff. For each site, each day of the year was given a rating of very high, high, medium, low, or none according to the expected volume of recreation visitors who would be leaving the site or area for the last time (last exiting recreation use). The stratum, a combination of site type and use level, was then used to construct the sampling frame. The results of the recreation site/area stratification and days sampled are displayed in Table 1.

Table 1. Site Days and Percentage of Days Sampled by Stratum

Stratum*		Days Sampled	Site Days# in Use Level/Proxy Population	Sampling Rate (%)&
Site Type†	Use Level‡ or Proxy Code§			
DUDS	HIGH	10	56	17.9
DUDS	MEDIUM	10	325	3.1
DUDS	LOW	16	2,245	0.7
DUDS	SV1	9	934	1.0
OU DS	HIGH	8	11	72.7
OU DS	MEDIUM	10	58	17.2
OU DS	LOW	12	1,673	0.7
OU DS	DUR4	16	8,179	0.2
OU DS	DUR5	6	1,486	0.4
OU DS	RE2	6	365	1.6
OU DS	RE4	6	429	1.4
GFA	VERY HIGH	10	204	4.9
GFA	HIGH	17	567	3.0
GFA	MEDIUM	47	4,201	1.1
GFA	LOW	86	12,821	0.7
WILDERNESS	HIGH	10	74	13.5
WILDERNESS	MEDIUM	10	104	9.6
WILDERNESS	LOW	10	335	3.0
Total		299	34,067	0.9

* Stratum is the combination of the site type and use level or proxy code. Sample days were independently drawn within each stratum.

† DUDS = Day Use Developed Site, OU DS = Overnight Use Developed Site, GFA = General Forest Area ("Undeveloped Areas"), WILDERNESS = Designated Wilderness

‡ Use level was defined independently by each forest by defining the expected number of recreation visitors that would be last-exiting a site or area on a given day. The forest developed the range for very high, high, medium, and low and then assigned each day of the year to one of the use levels.

§ Proxy Code - If the site or area already had counts of use (such as fee envelopes or ski lift tickets) the site was called a proxy site and sampled independent of nonproxy sites.

Site Days are days that a recreation site or area is open to the public for recreation purposes.

& 0.0 - This value is less than five one-hundredths.

2.2. Visitation Estimates

Visitation estimates are available at the national, regional, and forest level. This document provides only National Forest level data. Other documents may be obtained through the National Visitor Use Monitoring web page: www.fs.fed.us/recreation/programs/nvum.

When reviewing the results, users should discuss with forest staff if this forest experienced any unusual circumstances such as forest fires, floods, or atypical weather that may have created an unusual recreation use pattern for the year sampled. Table 2 displays the number of national forest visits and site visits by site type for this National Forest.

Table 2. Annual Visitation Estimate

Visit Type	Visits (1,000s)	90% Confidence Level (%)#
Total Estimated Site Visits*	1,831	±17.5
→ Day Use Developed Site Visits	590	±3.4
→ Overnight Use Developed Site Visits	156	±14.0
→ General Forest Area Visits	1,060	±30.1
→ Designated Wilderness Visits†	26	±19.1
Total Estimated National Forest Visits§	1,660	±17.8
→ Special Events and Organized Camp Use‡	15	±0.0

* A Site Visit is the entry of one person onto a National Forest site or area to participate in recreation activities for an unspecified period of time.

† Designated Wilderness visits are included in the Site Visits estimate.

‡ Special events and organizational camp use are not included in the Site Visit estimate, only in the National Forest Visits estimate. Forests reported the total number of participants and observers so this number is not estimated; it is treated as 100% accurate.

§ A National Forest Visit is defined as the entry of one person upon a national forest to participate in recreation activities for an unspecified period of time. A National Forest Visit can be composed of multiple Site Visits.

This value defines the upper and lower bounds of the visitation estimate at the 90% confidence level, for example if the visitation estimate is 100 +/-5%, one would say "at the 90% confidence level visitation is between 95 and 105 visits."

The quality of the use estimate is based in part on how many individuals were contacted during the sample day and how many complete interviews were obtained from which to estimate NVUM numbers and visitor descriptions. Table 3 and Table 4 display the number of visitor contacts, number of completed interviews by site type and survey form type. This information may be useful to managers when assessing how representative of all visitors the information in this report may be.

Table 3. Number of Individuals Contacted by Site Type

Site Type	Total Individuals Contacted	Individuals Who Agreed to be Interviewed	Recreating Individuals Who Are Leaving for the Last Time That Day
Day Use Developed Sites	418	345	281
Overnight Use Developed Sites	141	122	89
Undeveloped Areas (GFAs)	992	843	408
Designated Wilderness	238	185	182
Total	1,789	1,495	960

Table 4. Number of Complete Interviews* by Site Type and Form Type

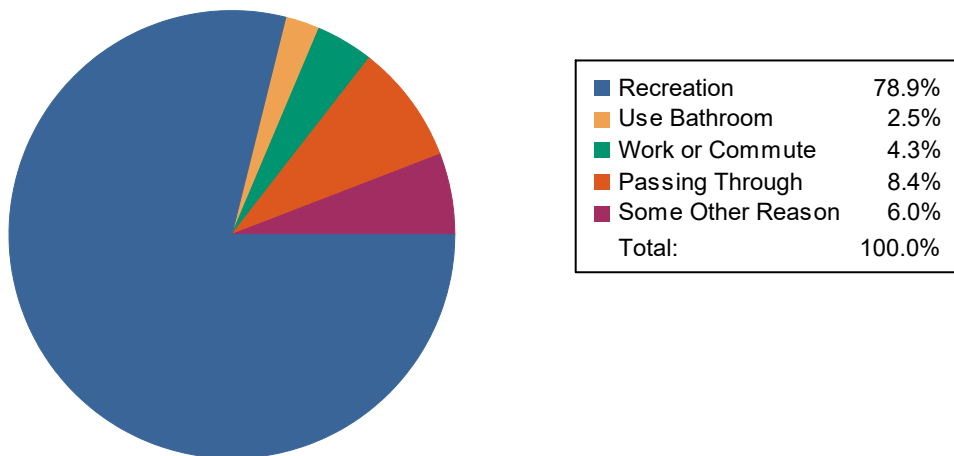
Form Type†	Developed Day Use Site	Developed Overnight	Undeveloped Areas (GFAs)	Wilderness	Total
Basic	97	38	156	68	359
Economic	94	23	140	54	311
Satisfaction	90	28	112	60	290
Total	281	89	408	182	960

* Complete interviews are those in which the individual contacted agreed to be interviewed, was recreating on the national forest and was exiting the site or area for the last time that day.

† Form Type is the type of interview form administered to the visitor. The Basic form did not ask either economic or satisfaction questions. The Satisfaction form did not ask economic questions and the Economic form did not ask satisfaction questions.

Visitors were interviewed regardless of whether they were recreating at the site or not, however the interview was discontinued after determining that the reason for visiting the site was not recreation. Figure 1 displays the various reasons visitors gave as their purpose for stopping at the sample site.

Figure 1. Purpose of Visit by Visitors Who Agreed to be Interviewed



3. DESCRIPTION OF THE RECREATION VISIT

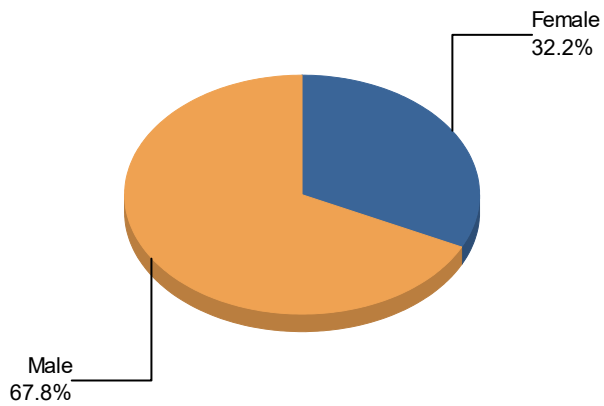
3.1. Demographics

Descriptions of forest recreational visits were developed based upon the characteristics of interviewed visitors (respondents) and expanded to the national forest visitor population. Basic demographic information helps forest managers identify the profile of the visitors they serve. Management concerns such as providing recreation opportunities for underserved populations may be monitored with this information. Table 5, Table 6 and Table 7 provide basic demographic information about visitors interviewed regarding Gender, Race/Ethnicity, and Age, respectively. Table 8 shows the 15 most common reported origins for recreation visitors. A complete list of reported zip codes for respondents is found in Appendix A. Table 9 provides information about self reported travel distance from home to the interview site.

Demographic results show that about 32% of visits to the Tahoe NF are made by females. Among racial and ethnic minorities, the most commonly encountered are Hispanic/Latino (5%). The age distribution shows that about 13% visits are children under age 16. People over the age of 60 account for about 17% of visits. More than half of visits are from those living in the local area: 52% of visits come from people who live within 50 miles. About 9% of visits come from those living more than 200 miles away.

Table 5. Percent of National Forest Visits* by Gender

Gender	Survey Respondents†	National Forest Visits (%)‡
Female	825	32.2
Male	1,080	67.8
Total	1,905	100.0



* A National Forest Visit is defined as the entry of one person upon a national forest to participate in recreation activities for an unspecified period of time. A National Forest Visit can be composed of multiple Site Visits.

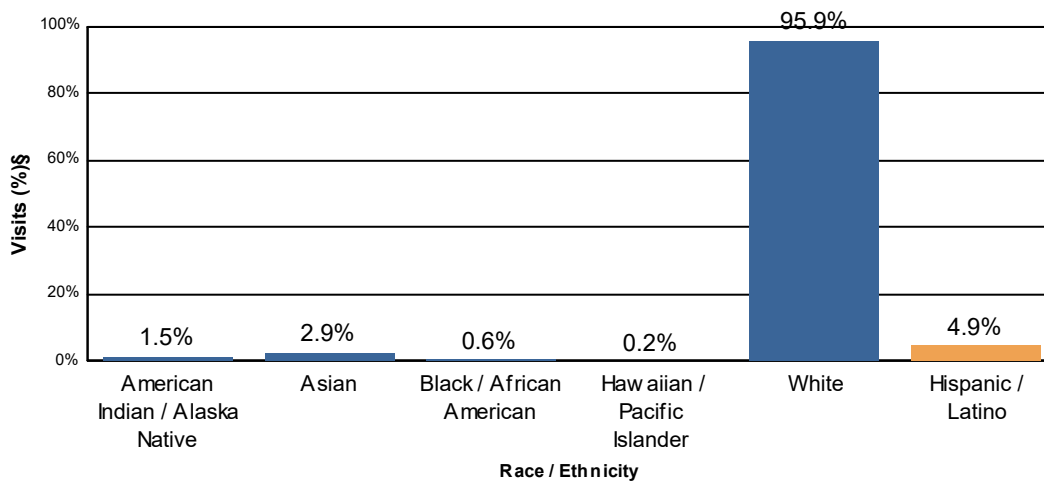
† Non-respondents to gender questions were excluded from analysis.

‡ Calculations are computed using weights that expand the sample of individuals to the population of National Forest Visits.

Table 6. Percent of National Forest Visits* by Race/Ethnicity

Race †	Survey Respondents‡	National Forest Visits (%)§#
American Indian / Alaska Native	16	1.5
Asian	26	2.9
Black / African American	5	0.6
Hawaiian / Pacific Islander	4	0.2
White	838	95.9
Total	889	101.1

Ethnicity†	Survey Respondents‡	National Forest Visits (%)§
Hispanic / Latino	46	4.9



* A National Forest Visit is defined as the entry of one person upon a national forest to participate in recreation activities for an unspecified period of time. A National Forest Visit can be composed of multiple Site Visits.

Respondents could choose more than one racial group, so the total may be more than 100%.

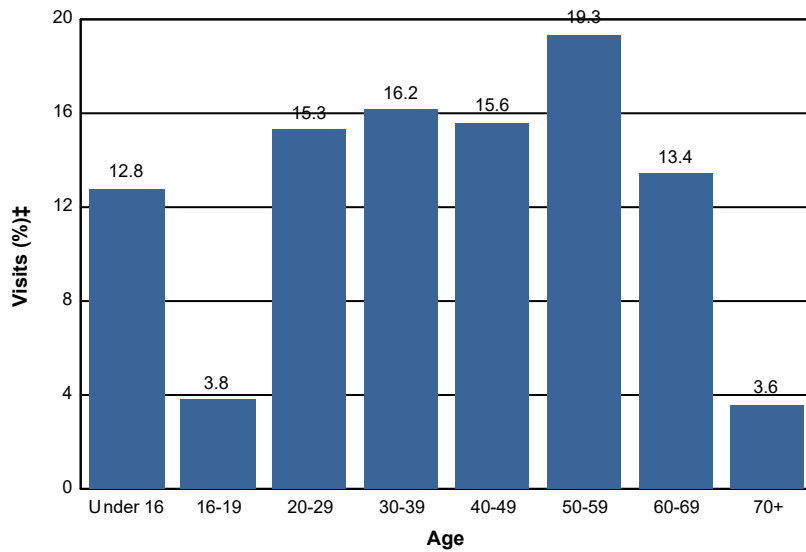
† Race and Ethnicity were asked as two separate questions.

‡ Non-respondents to race/ethnicity questions were excluded from analysis.

§ Calculations are computed using weights that expand the sample of individuals to the population of National Forest Visits.

Table 7. Percent of National Forest Visits* by Age

Age Class	National Forest Visits (%)‡
Under 16	12.8
16-19	3.8
20-29	15.3
30-39	16.2
40-49	15.6
50-59	19.3
60-69	13.4
70+	3.6
Total	100.0



* A National Forest Visit is defined as the entry of one person upon a national forest to participate in recreation activities for an unspecified period of time. A National Forest Visit can be composed of multiple Site Visits.

† Non-respondents to age questions were excluded from analysis.

‡ Calculations are computed using weights that expand the sample of individuals to the population of National Forest Visits.

Table 8. Top 15 Most Commonly Reported ZIP Codes, States and Counties of National Forest Survey Respondents

ZIP Code	State	County	Percent of Respondents	Survey Respondents (n)
96161	California	Nevada County	45.4	164
96145	California	Placer County	7.5	27
95945	California	Nevada County	5.8	21
Unknown Origin*			5.5	20
96160	California	Nevada County	5.0	18
95959	California	Nevada County	4.7	17
95631	California	Placer County	3.6	13
96146	California	Placer County	3.6	13
95603	California	Placer County	3.3	12
89523	Nevada	Washoe County	2.8	10
89509	Nevada	Washoe County	2.8	10
89511	Nevada	Washoe County	2.8	10
89503	Nevada	Washoe County	2.5	9
95949	California	Nevada County	2.5	9
89451	Nevada	Washoe County	2.2	8

* Includes respondents reporting no ZIP code or an invalid ZIP code.

Table 9. Percent of National Forest Visits* by Distance Traveled

Miles from Survey Respondent's Home to Interview Location†	National Forest Visits (%)
0 - 25 miles	35.9
26 - 50 miles	17.1
51 - 75 miles	10.1
76 - 100 miles	9.8
101 - 200 miles	17.7
201 - 500 miles	5.3
Over 500 miles	4.1
Total	100.0

Note: Blank cells indicate that insufficient data were collected to make inferences.

* National Forest Visits are defined as the entry of one person upon a national forest to participate in recreation activities for an unspecified period of time. A National Forest Visit can be composed of multiple Site Visits.

† Travel distance is self-reported.

3.2. Visit Descriptions

Characteristics of the recreation visit such as length of visit, types of sites visited, activity participation and visitor satisfaction with forest facilities and services help managers understand recreation use patterns and use of facilities. This allows them to plan workforce and facility needs. The average national forest visit length of stay and average site visit length of stay by site type on this forest is displayed in Table 10. Since the average values displayed in Table 10 may be influenced by a few people staying a very long time, the median value is also shown.

More than 67% of visits to this forest last at most 6 hours; the average duration is about 12 hours. The median length of visit to overnight sites is about 44 hours, indicating a three night stay. About 36% of visits come from people who visit at most 5 times per year. Very frequent visitors are fairly common: about 22% of visits are made by people who visit more than 50 times per year.

Table 10. Visit Duration

Visit Type	Average Duration (hours)‡	Median Duration (hours)‡
Site Visit	13.0	3.4
Day Use Developed	3.2	3.0
Overnight Use Developed	58.1	44.5
Undeveloped Areas	11.9	3.0
Designated Wilderness	3.3	2.8
National Forest Visit	14.5	3.9

* A Site Visit is the entry of one person onto a national forest site or area to participate in recreation activities for an unspecified period of time. Sites and areas were divided into four site types as listed here.

† A National Forest Visit is defined as the entry of one person upon a national forest to participate in recreation activities for an unspecified period of time. A National Forest Visit can be composed of multiple Site Visits.

‡ If this variable is blank not enough surveys were collected to make inferences.

Many of the respondents on this National Forest went only to the site at which they were interviewed (Table 11). Some visitors went to more than one recreation site or area during their national forest visit and the average site visits per national forest visit is shown below. Also displayed are the average people per vehicle and average axles per vehicle. This information in conjunction with traffic counts was used to expand observations from individual interviews to the full forest population of recreation visitors. This information may be useful to forest engineers and others who use vehicle counters to conduct traffic studies.

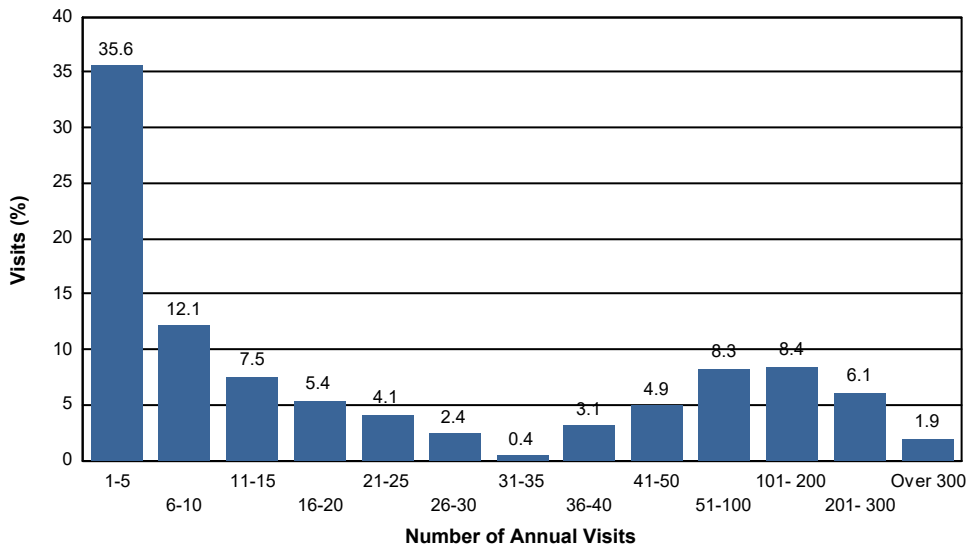
During the interview, visitors were asked how often they visit this national forest for all recreational activities, and how often for their primary activity. Table 12 summarizes the percent of visits that are made by those in each frequency category for this National Forest.

Table 11. Group Characteristics

Characteristic	Average
Percent of visits that were to just one national forest site during the National Forest Visit*	93.3
Number of national forest sites visited on National Forest Visit*	1.1
Group size	2.0
Axles per vehicle	2.1

Table 12. Percent of National Forest Visits* by Annual Visit Frequency

Number of Annual Visits	Visits (%)†	Cumulative Visits (%)
1 - 5	35.6	35.6
6 - 10	12.1	47.7
11 - 15	7.5	55.2
16 - 20	5.4	60.5
21 - 25	4.1	64.6
26 - 30	2.4	67.0
31 - 35	0.4	67.4
36 - 40	3.1	70.5
41 - 50	4.9	75.4
51 - 100	8.3	83.7
101 - 200	8.4	92.1
201 - 300	6.1	98.1
Over 300	1.9	100.0



* A National Forest Visit is defined as the entry of one person upon a national forest to participate in recreation activities for an unspecified period of time. A National Forest Visit can be composed of multiple Site Visits.

† The first row indicates the percent of National Forest Visits made by persons who visit 1 to 5 times per year. The last row indicates the percent of National Forest Visits made by persons who visit more than 300 times per year.

3.3. Activities

After identifying their main recreational activity, visitors were asked how many hours they spent participating in that main activity during this national forest visit. Some caution is needed when using this information. Because most national forest visitors participate in several recreation activities during each visit, it is more than likely that other visitors also participated in this activity, but did not identify it as their main activity. For example, on one national forest 63 % of visitors identified viewing wildlife as a recreational activity that they participated in during this visit, however only 3% identified that activity as their main recreational activity. The information on average hours viewing wildlife is only for the 3% who reported it as a main activity.

The most frequently reported primary activity was downhill skiing (23%). The second most common activity was hiking/walking (21%).

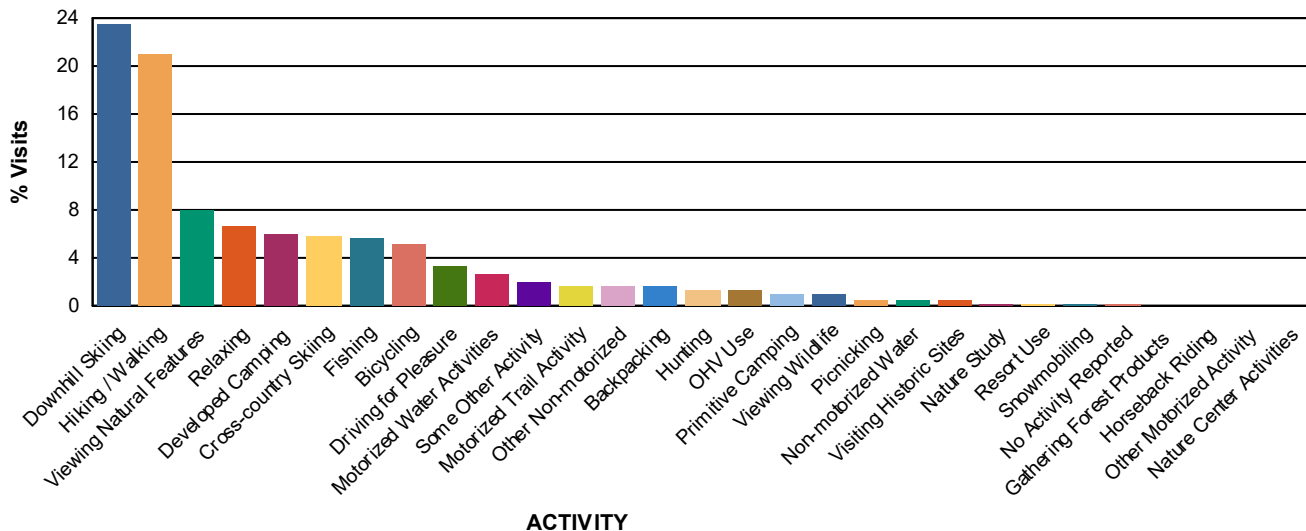
Use of Constructed Facilities and Designated Areas

About one-third of recreation visitors interviewed were asked about whether they made use of a targeted set of facilities and special designated areas during their visit. These results are displayed in Table 14.

Table 13. Activity Participation

Activity	% Participation*	% Main Activity‡	Avg Hours Doing Main Activity
Hiking / Walking	41.1	20.9	2.8
Viewing Natural Features	31.4	8.0	3.8
Relaxing	24.2	6.6	22.8
Viewing Wildlife	23.9	0.9	1.9
Downhill Skiing	23.6	23.4	3.2
Driving for Pleasure	14.5	3.2	1.8
Fishing	12.6	5.6	6.7
Developed Camping	12.4	6.0	45.2
Other Non-motorized	10.1	1.6	2.2
Bicycling	6.8	5.1	2.8
Picnicking	6.2	0.5	10.2
Cross-country Skiing	5.9	5.7	3.0
Motorized Water Activities	5.4	2.6	12.6
Primitive Camping	4.6	1.0	23.5
Visiting Historic Sites	4.2	0.4	1.8
Nature Study	4.1	0.2	14.1
OHV Use	2.9	1.2	14.1
Motorized Trail Activity	2.8	1.7	5.1
Non-motorized Water	2.6	0.5	1.9
Some Other Activity	2.3	1.9	2.3
Backpacking	2.2	1.5	27.7
Nature Center Activities	2.1	0.0	0.0
Hunting	1.5	1.3	5.1
Gathering Forest Products	1.4	0.0	1.0
Resort Use	1.1	0.2	151.4
Other Motorized Activity	0.9	0.0	2.0
Horseback Riding	0.2	0.0	5.0
Snowmobiling	0.2	0.2	3.5
No Activity Reported	0.0	0.1	

% Main Activity



* Survey respondents could select multiple activities so this column may total more than 100%.

† Survey respondents were asked to select just one of their activities as their main reason for the forest visit. Some respondents selected more than one, so this column may total more than 100%.

Special Facility Use

Table 14. Percent of National Forest Visits* Indicating Use of Special Facilities or Areas

Special Facility or Area	% of National Forest Visits†
Developed Swimming Site	10.2
Scenic Byway	7.3
Visitor Center or Museum	2.8
Designated ORV Area	11.3
Forest Roads	12.6
Interpretive Displays	3.4
Information Sites	3.1
Developed Fishing Site	6.8
Motorized Single Track Trails	9.9
Motorized Dual Track Trails	6.1
None of these Facilities	61.7

* A National Forest Visit is defined as the entry of one person upon a national forest to participate in recreation activities for an unspecified period of time. A National Forest Visit can be composed of multiple Site Visits.

† Survey respondents could select as many or as few special facilities or areas as appropriate.

4. ECONOMIC INFORMATION

Forest managers are usually very interested in the impact of National Forest recreation visits on the local economy. As commodity production of timber and other resources has declined, local communities look increasingly to tourism to support their communities. When considering recreation-related visitor spending managers are often interested both in identifying the average spending of individual visitors (or types of visitors) and the total spending associated with all recreation use. Spending averages for visitors or visitor parties can be estimated using data collected from a statistically valid visitor sampling program such as NVUM. To estimate the total spending associated with recreation use, three pieces of information are needed: an overall visitation estimate, the proportion of visits in the visitor types, and the average spending profiles for each of the visitor types. Multiplying the three gives a total amount of spending by a particular type of visitor. Summing over all visitor types gives total spending.

About one-third of the NVUM surveys included questions about trip-related spending within 50 miles of the site visited. Analysis of spending data included identification of the primary visitor segments that have distinct spending profiles as well as estimation of the average spending per party per visit. Results from the FY2005 through FY2009 period are available in a report: <https://www.treesearch.fs.fed.us/pubs/43869>. Results from the FY2010 through FY2014 period are in the publication process.

4.1. Spending Segments

The spending that occurs on a recreation trip is greatly influenced by the type of recreation trip taken. For example, visitors on overnight trips away from home typically have to pay for some form of lodging (e.g., hotel/motel rooms, fees in a developed campground, etc.) while those on day trips do not. In addition, visitors on overnight trips will generally have to purchase more food during their trip (in restaurants or grocery stores) than visitors on day trips. Visitors who have not traveled far from home to the recreation location usually spend less than visitors traveling longer distances, especially on items such as fuel and food. Analysis of spending patterns has shown that a good way to construct segments of the visitor market with consistent spending patterns is the following seven groupings:

1. local visitors on day trips,
2. local visitors on overnight trips staying in lodging on the national forest,
3. local visitors on overnight trips staying in lodging off the national forest, and
4. non-local visitors on day trips,
5. non-local visitors on overnight trips staying in lodging on the national forest,
6. non-local visitors on overnight trips staying in lodging off the forest,
7. non-primary visitors.

Local visitors are those who travel less than 50 road miles from home to the recreation site visited and non-local visitors are those who travel greater than 50 road miles to the recreation site visited. Non-primary visitors are those for whom the primary purpose of their trip is something other than recreating on that national forest. The distribution of visits by spending segment is not displayed in this report. See the appendix tables in the spending analysis report cited above for spending segment distributions.

More than 59% of the visits to the Plumas NF are day trips away from home, rather than overnight trips from home. The income distribution results show a concentration in the lower and middle range: about 40% of visits are from those in households making between \$25,000 and \$100,000.

Table 15 is no longer displayed here

4.2. Spending Profiles

Spending profiles for each segment are contained in the spending analysis report, as are tables that identify whether visitors to a particular forest are in a higher or lower than average range. It is essential to note that the spending profiles are in dollars per party per visit. Obtaining per visit spending is accomplished by dividing the spending for each segment by the average people per party for the forest and spending segment. These data are in the appendix of the report.

4.3. Total Direct Spending

Total direct spending made within 50 miles of the forest and associated with national forest recreation is calculated by combining estimates of per party spending averages with the number of party trips in the segment. The number of party-trips in the segment equals the number of National Forest visits reported in table 2, times the percentage of visits in each spending segment, and divided by the average people per party.

4.4. Other Visit Information

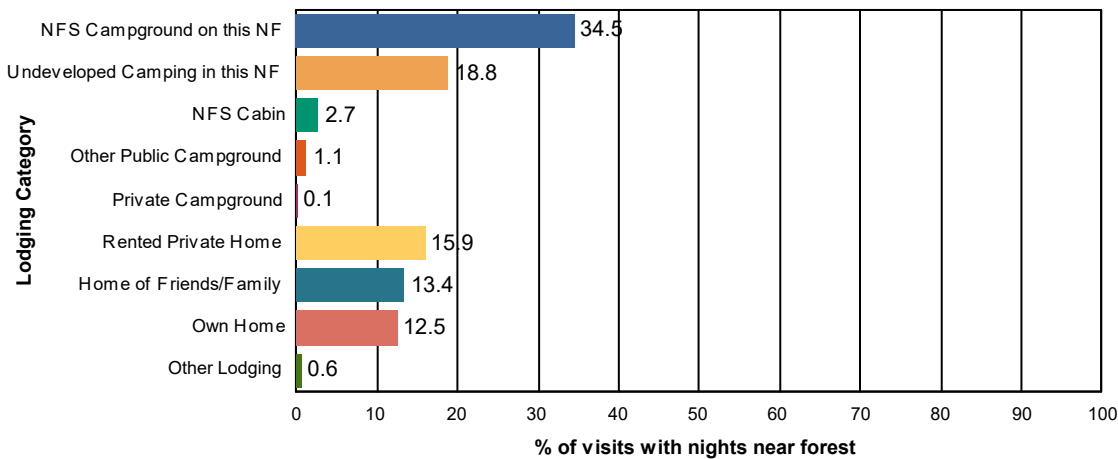
There are several other important aspects of the trips on which the recreation visits to the forest are made. These are summarized in Table 16. The first aspect relates to total amount spent by the recreating party on the trip. This includes spending not just within 50 miles of the forest, but anywhere. The table shows both the average and the median. Another set describes the overall length of the trips on which the visits are made. The table shows the percent of the visits that were made on trips where the person stayed away from home overnight (even though the forest visit may be just a day visit), and the average total nights away from home and nights spent within 50 miles of the forest. For those spending one or more nights in or near the forest, the table shows the percentage that selected each of a series of lodging options. Together, these results help show the context of overall trip length and lodging patterns for visitors to the forest.

Table 16. Trip Spending and Lodging Usage

Trip Spending	Value
Average Total Trip Spending per Party	\$205
Median Total Trip Spending per Party	\$50
% NF Visits made on trip with overnight stay away from home	33.9%
% NF Visits with overnight stay within 50 miles of NF	33.4%
Mean nights/visit within 50 miles of NF	3.5
Area Lodging Use	% Visits with Nights Near Forest
NFS Campground on this NF	34.5%
Undeveloped Camping in this NF	18.8%
NFS Cabin	2.7%
Other Public Campground	1.1%
Private Campground	0.1%
Rented Private Home	15.9%
Home of Friends/Family	13.4%
Own Home	12.5%
Other Lodging	0.6%

Area Lodging Use

% Visits with Nights Near Forest



4.5. Household Income

Visitors were asked to report a general category for their total household income. Only very general categories were used, to minimize the intrusive nature of the question. Results help indicate the overall socio-economic status of visitors to the forest, and are found in Table 17.

Table 17. Percent of National Forest Visits* by Annual Household Income

Annual Household Income Category	National Forest Visits (%)
Under \$25,000	5.3
\$25,000 to \$49,999	9.6
\$50,000 to \$74,999	15.5
\$75,000 to \$99,999	15.5
\$100,000 to \$149,999	23.9
\$150,000 and up	30.1
Total	99.9

* National Forest Visits are defined as the entry of one person upon a national forest to participate in recreation activities for an unspecified period of time. A National Forest Visit can be composed of multiple Site Visits.

4.6. Substitute Behavior

Visitors were asked to select one of several substitute choices, if for some reason they were unable to visit this national forest (Figure 3). Choices included going somewhere else for the same activity they did on the current trip, coming back to this forest for the same activity at some later time, going someplace else for a different activity, staying at home and not making a recreation trip, going to work instead of recreating, and a residual 'other' category. On most forests, the majority of visitors indicate that their substitute behavior choice is activity driven (going elsewhere for same activity) and a smaller percentage indicate they would come back later to this national forest for the same activity. For those visitors who said they would have gone somewhere else for recreation they were asked how far from their home this alternate destination was. These results are shown in Figure 4.

Figure 3. Substitute Behavior Choices

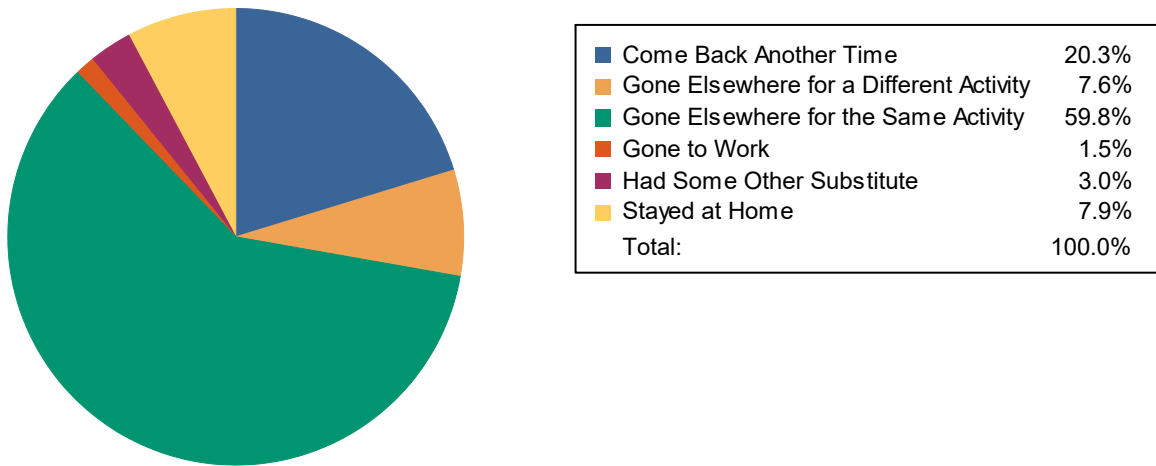
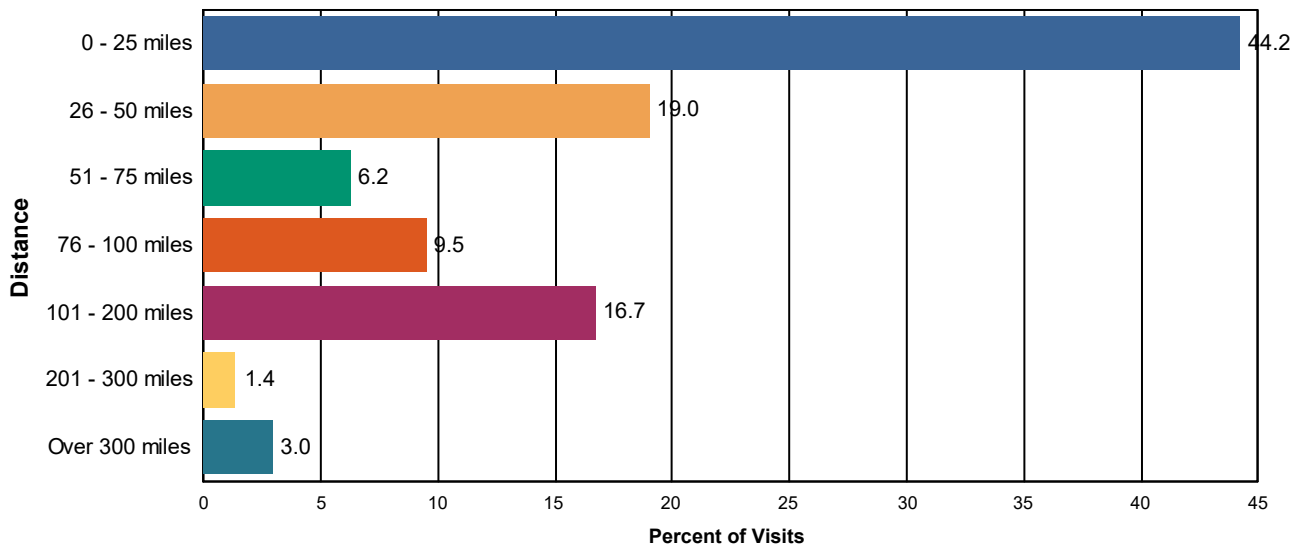


Figure 4. Reported Distance Visitors Would Travel to Alternate Location



5. SATISFACTION INFORMATION

An important element of outdoor recreation program delivery is evaluating customer satisfaction with the recreation setting, facilities, and services provided. Satisfaction information helps managers decide where to invest in resources and to allocate resources more efficiently toward improving customer satisfaction. Satisfaction is a core piece of data for national- and forest-level performance measures. To describe customer satisfaction, several different measures are used. Recreation visitors were asked to provide an overall rating of their visit to the national forest, on a 5-point Likert scale. About one-third of visitors interviewed on the forest rated their satisfaction with fourteen elements related to recreation facilities and services, and the importance of those elements to their recreation experience. Visitors were asked to rate the specific site or area at which they were interviewed. Visitors rated both the importance and performance (satisfaction with) of these elements using a 5-point scale. The Likert scale for importance ranged from not important to very important. The Likert scale for performance ranged from very dissatisfied to very satisfied. Although the satisfaction ratings specifically referenced the area where the visitor was interviewed, the survey design does not usually have enough responses for any individual site or area on the forest to present information at a site level. Rather, the information is generalized to overall satisfaction within the three site types: Day Use Developed (DUDS), Overnight Use Developed (OUDS), General Forest Areas, and on the forest as a whole.

The satisfaction responses are analyzed in several ways. First, a graph of overall satisfaction is presented in Figure 5. Next, two aggregate measures were calculated from the set of individual elements. The satisfaction elements most readily controlled by managers were aggregated into four categories: developed facilities, access, services, and visitor safety. The site types sampled were aggregated into three groups: developed sites (includes both day use and overnight developed sites), dispersed areas, and designated Wilderness. The first aggregate measure is called “Percent Satisfied Index (PSI)”, which is the proportion of all ratings for the elements in the category where the satisfaction ratings had a numerical rating of 4 or 5. Conceptually, the PSI indicator shows the percent of all recreation customers who are satisfied with agency performance. The agency’s national target for this measure is 85%. It is usually difficult to consistently have a higher satisfaction score than 85% since given tradeoffs among user groups and other factors. Table 18 displays the aggregate PSI scores for this forest.

Another aggregate measure of satisfaction is called “Percent Meet Expectations (PME)”. This is the proportion of satisfaction ratings in which the numerical satisfaction rating for a particular element is equal to or greater than the importance rating for that element. This indicator tracks the congruence between the agency’s performance and customer evaluations of importance. The idea behind this measure is that those elements with higher importance levels must have higher performance levels. Figure 6 displays the PME scores by type of site. Lower scores indicate a gap between desires and performance.

An Importance-Performance Analysis (IPA) (Hudson, et al, Feb 2004) was calculated for the importance and satisfaction scores. A target level of importance and performance divides the possible set of score pairs into four quadrants. For this work, the target level of both was a numerical score of 4.0. Each quadrant has a title that helps in interpreting responses that fall into it, and that provides some general guidance for management. These can be described as:

1. Importance at or above 4.0, Satisfaction at or above 4.0: **Keep up the good work**. These are items that are important to visitors and ones that the forest is performing quite well;
2. Importance at or above 4.0, Satisfaction under 4.0: **Concentrate here**. These are important items to the public, but performance is not where it needs to be. Increasing effort here is likely to have the greatest payoff in overall customer satisfaction;
3. Importance below 4.0, Satisfaction above 4.0: **Possible overkill**. These are items that are not highly important to visitors, but the forest's performance is quite good. It may be possible to reduce effort here without greatly harming overall satisfaction;
4. Importance below 4.0; Satisfaction below 4.0: **Low Priority**. These are items where performance is not very good, but neither are they important to visitors. Focusing effort here is unlikely to have a great impact.

We present tables that show the I-P rating title for each satisfaction element. Each sitetype is presented in a separate table. Results are presented in Tables 19 - 22.

The numerical scores for visitor satisfaction and importance for each element by site type, and the sample sizes for each are presented in Appendix B (Tables B1 - B4). Most managers find it difficult to discern meaning from these raw tables; however they may wish to examine specific elements once they have reviewed the other satisfaction information presented in this section. Note that if an element had fewer than 10 responses no analyses are performed, as there are too few responses to provide reliable information. Finally, visitors were asked about their overall satisfaction with and the importance of road condition and the adequacy of signage. Figure 7a and Figure 7b show the results.

The overall satisfaction results are quite good. About 80% of people visiting indicated they were very satisfied with their overall recreation experience. Another 14% were somewhat satisfied. The results for the composite indices were also very good. Satisfaction ratings for perception of safety were over 89% for all types of sites. Ratings for the other composites were 84% or higher in developed sites.

Figure 5. Percent of National Forest Visits by Overall Satisfaction Rating

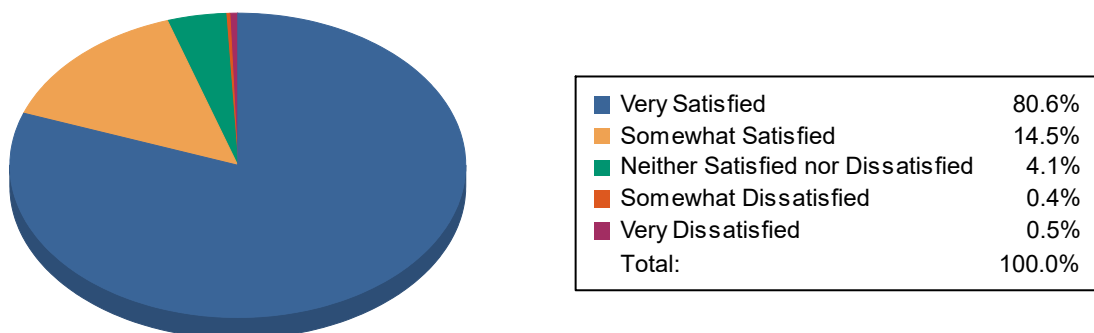


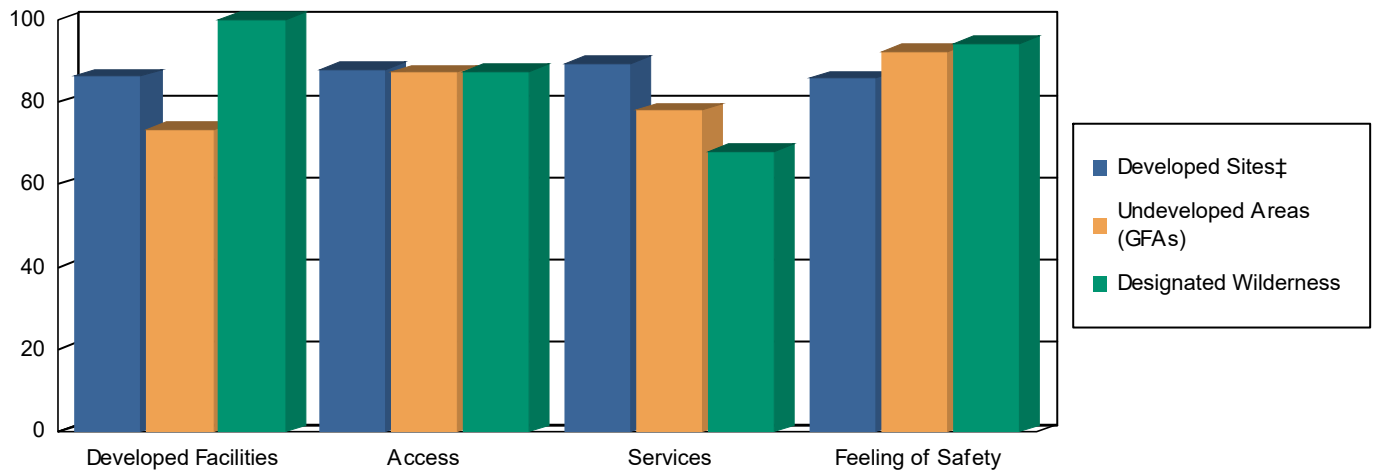
Table 18. Percent Satisfied Index† Scores for Aggregate Categories

Satisfaction Element	Satisfied Survey Respondents (%)		
	Developed Sites‡	Undeveloped Areas (GFAs)	Designated Wilderness
Developed Facilities	89.5	83.2	100.0
Access	90.9	87.9	89.7
Services	84.9	68.4	57.9
Feeling of Safety	89.3	98.3	97.9

† This is a composite rating. It is the proportion of satisfaction ratings scored by visitors as good (4) or very good (5). Computed as the percentage of all ratings for the elements within the sub grouping that are at or above the target level, and indicates the percent of all visitors that are reasonably well satisfied with agency performance.

‡ This category includes both Day Use and Overnight Use Developed Sites.

Figure 6. Percent Meets Expectations Scores*



* “Percent Meet Expectations (PME)” is the proportion of satisfaction ratings in which the numerical satisfaction rating for a particular element is equal to or greater than the importance rating for that element. This indicator tracks the congruence between the agency’s performance and customer evaluations of importance. The idea behind this measure is that those elements with higher importance levels must have higher performance levels. Lower scores indicate a gap between desires and performance.

‡ This category includes both Day Use and Overnight Use Developed Sites.

Table 19. Importance-Performance Ratings for Day Use Developed Sites

Satisfaction Element	Importance-Performance Rating
Restroom Cleanliness	Keep up the Good Work
Developed Facilities	Keep up the Good Work
Condition of Environment	Keep up the Good Work
Employee Helpfulness	Keep up the Good Work
Interpretive Displays	Keep up the Good Work
Parking Availability	Keep up the Good Work
Parking Lot Condition	Keep up the Good Work
Rec. Info. Availability	Keep up the Good Work
Road Condition	Keep up the Good Work
Feeling of Safety	Keep up the Good Work
Scenery	Keep up the Good Work
Signage Adequacy	Possible Overkill
Trail Condition	Keep up the Good Work
Value for Fee Paid	Keep up the Good Work

Table 20. Importance-Performance Ratings for Overnight Developed Sites

Satisfaction Element	Importance-Performance Rating
Restroom Cleanliness	Keep up the Good Work
Developed Facilities	Keep up the Good Work
Condition of Environment	Keep up the Good Work
Employee Helpfulness	Keep up the Good Work
Interpretive Displays	Possible Overkill
Parking Availability	Keep up the Good Work
Parking Lot Condition	Possible Overkill
Rec. Info. Availability	Concentrate Here
Road Condition	Low Priority
Feeling of Safety	Keep up the Good Work
Scenery	Keep up the Good Work
Signage Adequacy	Keep up the Good Work
Trail Condition	Keep up the Good Work
Value for Fee Paid	Keep up the Good Work

Table 21. Importance-Performance Ratings for Undeveloped Areas (GFAs)

Satisfaction Element	Importance-Performance Rating
Restroom Cleanliness	Concentrate Here
Developed Facilities	Keep up the Good Work
Condition of Environment	Keep up the Good Work
Employee Helpfulness	*
Interpretive Displays	Low Priority
Parking Availability	Possible Overkill
Parking Lot Condition	Possible Overkill
Rec. Info. Availability	Keep up the Good Work
Road Condition	Possible Overkill
Feeling of Safety	Keep up the Good Work
Scenery	Keep up the Good Work
Signage Adequacy	Possible Overkill
Trail Condition	Keep up the Good Work
Value for Fee Paid	*

* The data was not reported for items with fewer than 10 responses.

Table 22. Importance-Performance Ratings for Designated Wilderness

Satisfaction Element	Importance-Performance Rating
Restroom Cleanliness	*
Developed Facilities	*
Condition of Environment	Keep up the Good Work
Employee Helpfulness	*
Interpretive Displays	Low Priority
Parking Availability	Keep up the Good Work
Parking Lot Condition	Possible Overkill
Rec. Info. Availability	Keep up the Good Work
Road Condition	Keep up the Good Work
Feeling of Safety	Keep up the Good Work
Scenery	Keep up the Good Work
Signage Adequacy	Concentrate Here
Trail Condition	Keep up the Good Work
Value for Fee Paid	*

* The data was not reported for items with fewer than 10 responses.

Road Conditions & Signage

Figure 7a. Satisfaction with Forest-wide Road Conditions & Signage Adequacy

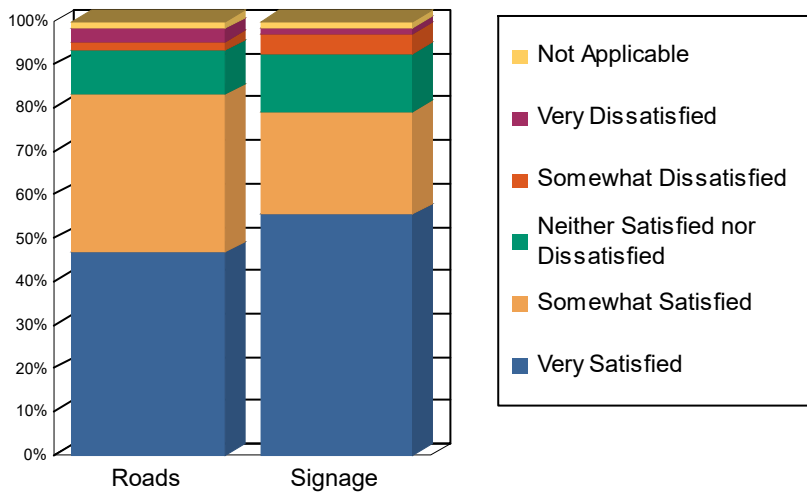
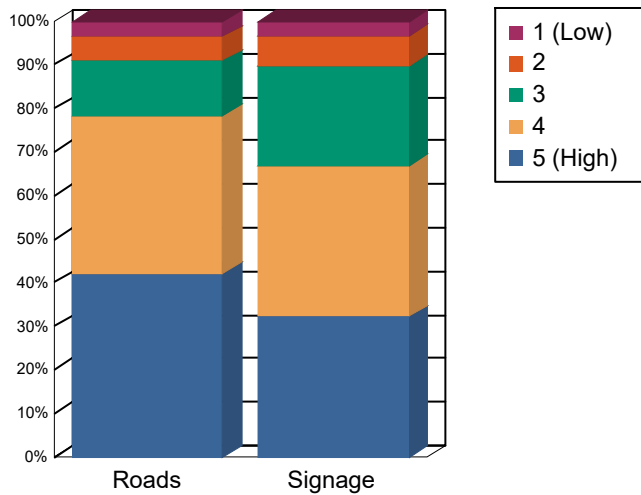


Figure 7b. Importance of Forest-wide Road Conditions & Signage Adequacy



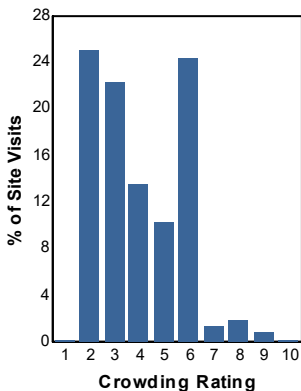
5.1. Crowding

Visitors rated their perception of how crowded the recreation site or area felt to them. This information is useful when looking at the type of site the visitor was using since someone visiting a designated Wilderness may think 5 people is too many while someone visiting a developed campground may think 200 people is about right. Table 23 shows the distribution of responses for each site type. Crowding was reported on a scale of 1 to 10 where 1 denotes hardly anyone was there, and a 10 indicates the area was perceived as overcrowded.

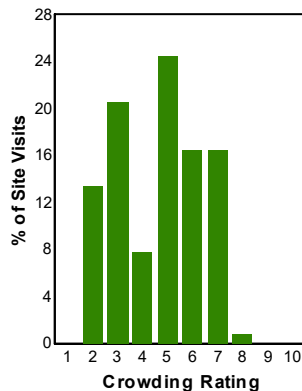
Table 23. Percent of Site Visits* by Crowding Rating and Site Type

Crowding Rating†	Site Types (% of Site Visits)			
	Day Use Developed Sites	Overnight Use Developed Sites	Undeveloped Areas (GFAs)	Designated Wilderness
10 - Overcrowded	0.1	0.0	0.0	0.0
9	0.8	0.0	3.5	1.4
8	1.9	0.8	3.5	6.3
7	1.5	16.4	8.8	6.3
6	24.4	16.5	13.4	40.3
5	10.4	24.4	7.0	12.4
4	13.5	7.8	16.6	13.6
3	22.3	20.6	20.8	10.3
2	25.0	13.4	24.7	8.1
1 - Hardly anyone there	0.1	0.0	1.7	1.4
Average Rating	4.0	4.6	4.2	5.1

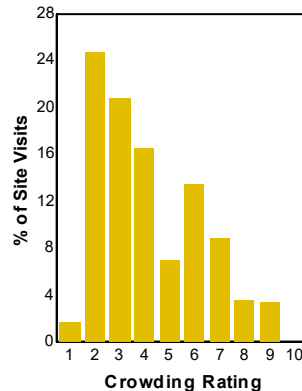
Day Use Developed Sites



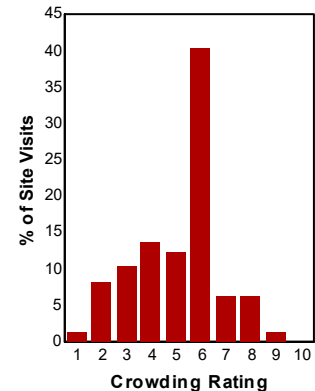
Overnight Use Developed Sites



Undeveloped Areas (GFAs)



Designated Wilderness



* A Site Visit is the entry of one person onto a national forest site or area to participate in recreation activities for an unspecified period of time.

† Survey respondents rated how crowded the site or area they were interviewed at was using a scale of 1 to 10 where 1 meant hardly anyone was there and 10 meant the site or area was overcrowded.

5.2. Disabilities

Providing barrier-free facilities for recreation visitors is an important part of facility and service planning and development. One question asked if anyone in their group had a disability. If so, the visitor was then asked if the facilities at the sites they visited were accessible for this person (Table 24).

Table 24. Accessibility of National Forest Facilities by Persons with Disabilities

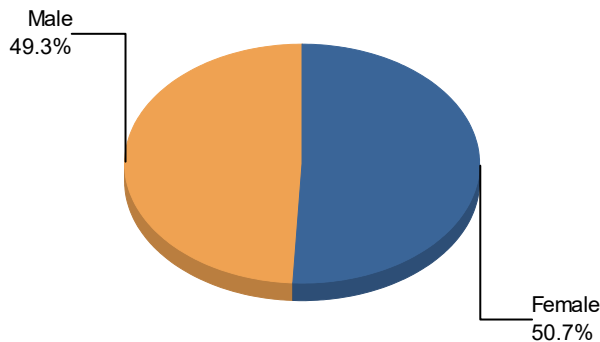
Item	Percent
% of visits that include a group member with a disability	3.2
Of this group, percent who said facilities at site visited were accessible	100.0

6. WILDERNESS VISIT DEMOGRAPHICS

Visits to Wilderness are sometimes made by a particular subset of the overall visitor population. In this chapter, tables are presented that describe the demographic characteristics of those who visit designated wilderness on this forest. Table 25 shows the gender breakdown, Table 26 the racial and ethnicity distribution, and the Table 27 age composition. In Table 28, a frequency analysis of Zip Codes obtained from respondents is presented, to give a rough idea of the common origins of Wilderness visitors.

Table 25. Percent of Wilderness Site Visits* by Gender

Gender	Survey Respondents†	Wilderness Site Visits (%)‡
Female	217	50.7
Male	201	49.3
Total	418	100.0



* A Site Visit is the entry of one person onto a National Forest site or area to participate in recreation activities for an unspecified period of time.

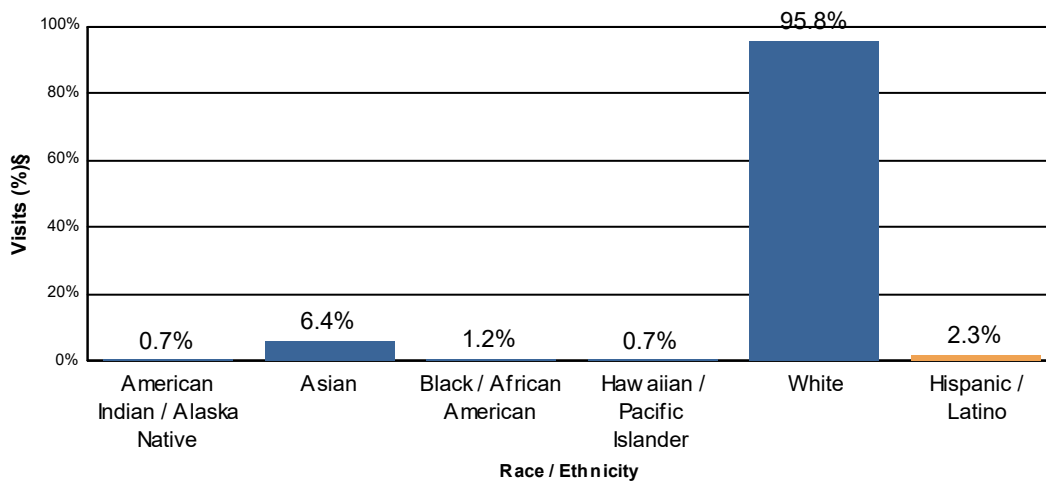
† Non-respondents to gender questions were excluded from analysis.

‡ Calculations are computed using weights that expand the sample of individuals to the population of Wilderness Site Visits.

Table 26. Percent of Wilderness Site Visits* by Race/Ethnicity

Race †	Survey Respondents‡	Wilderness Site Visits (%)§#
American Indian / Alaska Native	1	0.7
Asian	11	6.4
Black / African American	2	1.2
Hawaiian / Pacific Islander	1	0.7
White	165	95.8
Total	180	104.8

Ethnicity†	Survey Respondents‡	Wilderness Site Visits (%)§
Hispanic / Latino	4	2.3



* A Site Visit is the entry of one person onto a National Forest site or area to participate in recreation activities for an unspecified period of time.

Respondents could choose more than one racial group, so the total may be more than 100%.

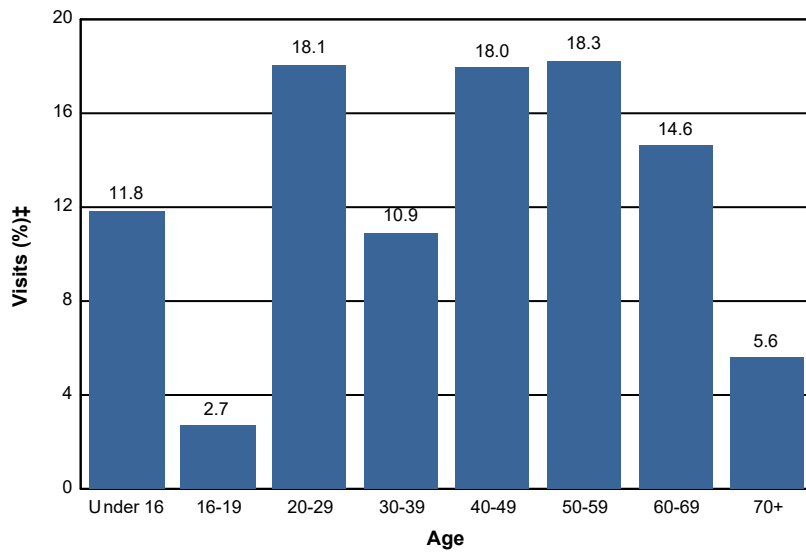
† Race and Ethnicity were asked as two separate questions.

‡ Non-respondents to race/ethnicity questions were excluded from analysis.

§ Calculations are computed using weights that expand the sample of individuals to the population of Wilderness Site Visits.

Table 27. Percent of Wilderness Site Visits* by Age

Age Class	Wilderness Site Visits (%)‡
Under 16	11.8
16-19	2.7
20-29	18.1
30-39	10.9
40-49	18.0
50-59	18.3
60-69	14.6
70+	5.6
Total	100.0



* A Site Visit is the entry of one person onto a National Forest site or area to participate in recreation activities for an unspecified period of time.

† Non-respondents to age questions were excluded from analysis.

‡ Calculations are computed using weights that expand the sample of individuals to the population of Wilderness Site Visits.

Table 28. Top 15 Most Commonly Reported ZIP Codes, States and Counties of Wilderness Survey Respondents

ZIP Code	State	County	Percent of Respondents	Survey Respondents (n)
96161	California	Nevada County	23.9	17
96145	California	Placer County	22.5	16
96146	California	Placer County	11.3	8
94611	California	Alameda County	5.6	4
94563	California	Contra Costa County	5.6	4
89451	Nevada	Washoe County	4.2	3
89503	Nevada	Washoe County	4.2	3
89523	Nevada	Washoe County	2.8	2
94703	California	Alameda County	2.8	2
95616	California	Yolo County	2.8	2
93405	California	San Luis Obispo County	2.8	2
Foreign Country			2.8	2
92805	California	Orange County	2.8	2
94070	California	San Mateo County	2.8	2
89511	Nevada	Washoe County	2.8	2

* Includes respondents reporting no ZIP code or an invalid ZIP code .

7. APPENDIX TABLES

APPENDIX A - Complete List of ZIP Codes

Table A-1. ZIP Codes, States and Counties of National Forest Survey Respondents

ZIP Code	State	County	Percent of Respondents	Survey Respondents (n)
96161	California	Nevada County	17.1	164
96145	California	Placer County	2.8	27
95945	California	Nevada County	2.2	21
Unknown Origin*			2.1	20
96160	California	Nevada County	1.9	18
95959	California	Nevada County	1.8	17
95631	California	Placer County	1.4	13
96146	California	Placer County	1.4	13
95603	California	Placer County	1.3	12
89523	Nevada	Washoe County	1.0	10
89509	Nevada	Washoe County	1.0	10
89511	Nevada	Washoe County	1.0	10
89503	Nevada	Washoe County	0.9	9
95949	California	Nevada County	0.9	9
89451	Nevada	Washoe County	0.8	8
95960	California	Nevada County	0.8	8
95746	California	Placer County	0.7	7
94611	California	Alameda County	0.7	7
95616	California	Yolo County	0.7	7
95661	California	Placer County	0.6	6
Foreign Country			0.6	6
95610	California	Sacramento County	0.6	6
95713	California	Placer County	0.6	6
89431	Nevada	Washoe County	0.6	6
94563	California	Contra Costa County	0.5	5
95602	California	Placer County	0.5	5
96143	California	Placer County	0.5	5
95662	California	Sacramento County	0.5	5
95747	California	Placer County	0.5	5
95608	California	Sacramento County	0.5	5
96140	California	Placer County	0.5	5
94610	California	Alameda County	0.5	5
95993	California	Sutter County	0.5	5
95922	California	Yuba County	0.4	4
95667	California	El Dorado County	0.4	4
95472	California	Sonoma County	0.4	4
95966	California	Butte County	0.4	4
95650	California	Placer County	0.4	4
89521	Nevada	Washoe County	0.4	4
96122	California	Plumas County	0.4	4

95811	California	Sacramento County	0.4	4
95818	California	Sacramento County	0.4	4
95677	California	Placer County	0.4	4
95648	California	Placer County	0.4	4
95630	California	Sacramento County	0.4	4
95476	California	Sonoma County	0.4	4
94070	California	San Mateo County	0.4	4
89439	Nevada	Washoe County	0.4	4
89502	Nevada	Washoe County	0.4	4
95765	California	Placer County	0.4	4
95864	California	Sacramento County	0.4	4
95658	California	Placer County	0.4	4
94131	California	San Francisco County	0.4	4
96150	California	El Dorado County	0.4	4
95062	California	Santa Cruz County	0.3	3
96142	California	El Dorado County	0.3	3
95624	California	Sacramento County	0.3	3
95991	California	Sutter County	0.3	3
94559	California	Napa County	0.3	3
95682	California	El Dorado County	0.3	3
95678	California	Placer County	0.3	3
95901	California	Yuba County	0.3	3
95954	California	Butte County	0.3	3
94114	California	San Francisco County	0.3	3
95628	California	Sacramento County	0.3	3
95614	California	El Dorado County	0.3	3
94703	California	Alameda County	0.3	3
94591	California	Solano County	0.3	3
96162	California	Nevada County	0.3	3
95975	California	Nevada County	0.3	3
94536	California	Alameda County	0.3	3
94123	California	San Francisco County	0.3	3
89423	Nevada	Douglas County	0.3	3
95817	California	Sacramento County	0.3	3
89519	Nevada	Washoe County	0.3	3
95673	California	Sacramento County	0.3	3
94117	California	San Francisco County	0.3	3
95621	California	Sacramento County	0.2	2
94596	California	Contra Costa County	0.2	2
94705	California	Alameda County	0.2	2
94110	California	San Francisco County	0.2	2
94607	California	Alameda County	0.2	2
94129	California	San Francisco County	0.2	2
94597	California	Contra Costa County	0.2	2
95965	California	Butte County	0.2	2
89450	Nevada	Washoe County	0.2	2
94122	California	San Francisco County	0.2	2
95618	California	Yolo County	0.2	2
96106	California	Plumas County	0.2	2
95118	California	Santa Clara County	0.2	2
89701	Nevada	Carson City	0.2	2

95722	California	Placer County	0.2	2
94612	California	Alameda County	0.2	2
94546	California	Alameda County	0.2	2
95660	California	Sacramento County	0.2	2
95448	California	Sonoma County	0.2	2
95728	California	Nevada County	0.2	2
89434	Nevada	Washoe County	0.2	2
94109	California	San Francisco County	0.2	2
96118	California	Sierra County	0.2	2
95123	California	Santa Clara County	0.2	2
95825	California	Sacramento County	0.2	2
94010	California	San Mateo County	0.2	2
93405	California	San Luis Obispo County	0.2	2
94044	California	San Mateo County	0.2	2
89436	Nevada	Washoe County	0.2	2
94566	California	Alameda County	0.2	2
94115	California	San Francisco County	0.2	2
95703	California	Placer County	0.2	2
95037	California	Santa Clara County	0.2	2
95843	California	Sacramento County	0.2	2
95688	California	Solano County	0.2	2
95712	California	Nevada County	0.2	2
93465	California	San Luis Obispo County	0.2	2
94904	California	Marin County	0.2	2
94901	California	Marin County	0.2	2
95816	California	Sacramento County	0.2	2
94518	California	Contra Costa County	0.2	2
89433	Nevada	Washoe County	0.2	2
95405	California	Sonoma County	0.2	2
95819	California	Sacramento County	0.2	2
94609	California	Alameda County	0.2	2
94111	California	San Francisco County	0.2	2
95066	California	Santa Cruz County	0.2	2
95691	California	Yolo County	0.2	2
96148	California	Placer County	0.2	2
92805	California	Orange County	0.2	2
94960	California	Marin County	0.2	2
95663	California	Placer County	0.2	2
89706	Nevada	Carson City	0.2	2
94107	California	San Francisco County	0.2	2
94301	California	Santa Clara County	0.2	2
94606	California	Alameda County	0.2	2
94061	California	San Mateo County	0.2	2
95926	California	Butte County	0.2	2
96141	California	Placer County	0.2	2
28210	North Carolina	Mecklenburg County	0.1	1
44122	Ohio	Cuyahoga County	0.1	1
84121	Utah	Salt Lake County	0.1	1
94509	California	Contra Costa County	0.1	1
94121	California	San Francisco County	0.1	1
98006	Washington	King County	0.1	1

65803	Missouri	Greene County	0.1	1
96022	California	Shasta County	0.1	1
98122	Washington	King County	0.1	1
94939	California	Marin County	0.1	1
95635	California	El Dorado County	0.1	1
95726	California	El Dorado County	0.1	1
94404	California	San Mateo County	0.1	1
95822	California	Sacramento County	0.1	1
92130	California	San Diego County	0.1	1
85086	Arizona	Maricopa County	0.1	1
94550	California	Alameda County	0.1	1
92116	California	San Diego County	0.1	1
94558	California	Napa County	0.1	1
94530	California	Contra Costa County	0.1	1
89512	Nevada	Washoe County	0.1	1
94538	California	Alameda County	0.1	1
95073	California	Santa Cruz County	0.1	1
75077	Texas	Denton County	0.1	1
90027	California	Los Angeles County	0.1	1
23462	Virginia	Virginia Beach city	0.1	1
92118	California	San Diego County	0.1	1
95642	California	Amador County	0.1	1
95928	California	Butte County	0.1	1
97761	Oregon	Jefferson County	0.1	1
94402	California	San Mateo County	0.1	1
11206	New York	Kings County	0.1	1
64129	Missouri	Jackson County	0.1	1
82007	Wyoming	Laramie County	0.1	1
89049	Nevada	Nye County	0.1	1
84103	Utah	Salt Lake County	0.1	1
93437	California	Santa Barbara County	0.1	1
94602	California	Alameda County	0.1	1
95826	California	Sacramento County	0.1	1
95815	California	Sacramento County	0.1	1
90630	California	Orange County	0.1	1
95835	California	Sacramento County	0.1	1
93923	California	Monterey County	0.1	1
95626	California	Sacramento County	0.1	1
49441	Michigan	Muskegon County	0.1	1
46220	Indiana	Marion County	0.1	1
92866	California	Orange County	0.1	1
76201	Texas	Denton County	0.1	1
94598	California	Contra Costa County	0.1	1
95946	California	Nevada County	0.1	1
80128	Colorado	Jefferson County	0.1	1
33755	Florida	Pinellas County	0.1	1
94619	California	Alameda County	0.1	1
86336	Arizona	Yavapai County	0.1	1
94582	California	Contra Costa County	0.1	1
94134	California	San Francisco County	0.1	1
92697	California	Orange County	0.1	1

14454	New York	Livingston County	0.1	1
95935	California	Yuba County	0.1	1
90035	California	Los Angeles County	0.1	1
94947	California	Marin County	0.1	1
93510	California	Los Angeles County	0.1	1
94041	California	Santa Clara County	0.1	1
94531	California	Contra Costa County	0.1	1
95014	California	Santa Clara County	0.1	1
92029	California	San Diego County	0.1	1
94534	California	Solano County	0.1	1
80537	Colorado	Larimer County	0.1	1
94510	California	Solano County	0.1	1
92610	California	Orange County	0.1	1
96125	California	Sierra County	0.1	1
94805	California	Contra Costa County	0.1	1
94588	California	Alameda County	0.1	1
95549	California	Humboldt County	0.1	1
95971	California	Plumas County	0.1	1
81301	Colorado	La Plata County	0.1	1
95065	California	Santa Cruz County	0.1	1
98108	Washington	King County	0.1	1
55419	Minnesota	Hennepin County	0.1	1
95852	California	Sacramento County	0.1	1
95982	California	Sutter County	0.1	1
95762	California	El Dorado County	0.1	1
89460	Nevada	Douglas County	0.1	1
95838	California	Sacramento County	0.1	1
85025	Arizona	Maricopa County	0.1	1
95692	California	Yuba County	0.1	1
10510	New York	Westchester County	0.1	1
60626	Illinois	Cook County	0.1	1
03303	New Hampshire	Merrimack County	0.1	1
94903	California	Marin County	0.1	1
96080	California	Tehama County	0.1	1
68102	Nebraska	Douglas County	0.1	1
84123	Utah	Salt Lake County	0.1	1
94587	California	Alameda County	0.1	1
95988	California	Glenn County	0.1	1
94603	California	Alameda County	0.1	1
95409	California	Sonoma County	0.1	1
81623	Colorado	Garfield County	0.1	1
95940	California	Butte County	0.1	1
94118	California	San Francisco County	0.1	1
94501	California	Alameda County	0.1	1
55437	Minnesota	Hennepin County	0.1	1
94945	California	Marin County	0.1	1
95304	California	San Joaquin County	0.1	1
95929	California	Butte County	0.1	1
95356	California	Stanislaus County	0.1	1
37075	Tennessee	Sumner County	0.1	1
95020	California	Santa Clara County	0.1	1

33458	Florida	Palm Beach County	0.1	1
95831	California	Sacramento County	0.1	1
95842	California	Sacramento County	0.1	1
46041	Indiana	Clinton County	0.1	1
96019	California	Shasta County	0.1	1
95124	California	Santa Clara County	0.1	1
92021	California	San Diego County	0.1	1
89406	Nevada	Churchill County	0.1	1
94517	California	Contra Costa County	0.1	1
98387	Washington	Pierce County	0.1	1
95401	California	Sonoma County	0.1	1
95827	California	Sacramento County	0.1	1
95407	California	Sonoma County	0.1	1
94949	California	Marin County	0.1	1
97062	Oregon	Washington County	0.1	1
92708	California	Orange County	0.1	1
27527	North Carolina	Johnston County	0.1	1
95664	California	El Dorado County	0.1	1
95122	California	Santa Clara County	0.1	1
95136	California	Santa Clara County	0.1	1
95043	California	San Benito County	0.1	1
93001	California	Ventura County	0.1	1
84078	Utah	Uintah County	0.1	1
92831	California	Orange County	0.1	1
27514	North Carolina	Orange County	0.1	1
94553	California	Contra Costa County	0.1	1
95503	California	Humboldt County	0.1	1
95977	California	Yuba County	0.1	1
95336	California	San Joaquin County	0.1	1
91601	California	Los Angeles County	0.1	1
52211	Iowa	Poweshiek County	0.1	1
95695	California	Yolo County	0.1	1
95820	California	Sacramento County	0.1	1
91030	California	Los Angeles County	0.1	1
94503	California	Napa County	0.1	1
95050	California	Santa Clara County	0.1	1
97601	Oregon	Klamath County	0.1	1
95853	California	Sacramento County	0.1	1
94302	California	Santa Clara County	0.1	1
85308	Arizona	Maricopa County	0.1	1
63021	Missouri	St. Louis County	0.1	1
20910	Maryland	Montgomery County	0.1	1
94618	California	Alameda County	0.1	1
94038	California	San Mateo County	0.1	1
94024	California	Santa Clara County	0.1	1
89408	Nevada	Lyon County	0.1	1
94525	California	Contra Costa County	0.1	1
80503	Colorado	Boulder County	0.1	1
94965	California	Marin County	0.1	1
92103	California	San Diego County	0.1	1
95446	California	Sonoma County	0.1	1

93063	California	Ventura County	0.1	1
94568	California	Alameda County	0.1	1
48823	Michigan	Ingham County	0.1	1
95656	California	El Dorado County	0.1	1
95828	California	Sacramento County	0.1	1
95060	California	Santa Cruz County	0.1	1
95709	California	El Dorado County	0.1	1
95776	California	Yolo County	0.1	1
92647	California	Orange County	0.1	1
94526	California	Contra Costa County	0.1	1
93401	California	San Luis Obispo County	0.1	1
95665	California	Amador County	0.1	1
94040	California	Santa Clara County	0.1	1
89310	Nevada	Lander County	0.1	1
94709	California	Alameda County	0.1	1
89427	Nevada	Mineral County	0.1	1
96002	California	Shasta County	0.1	1
97448	Oregon	Lane County	0.1	1
94060	California	San Mateo County	0.1	1
94931	California	Sonoma County	0.1	1
94025	California	San Mateo County	0.1	1
94925	California	Marin County	0.1	1
19343	Pennsylvania	Chester County	0.1	1
95121	California	Santa Clara County	0.1	1
34974	Florida	Okeechobee County	0.1	1
61262	Illinois	Henry County	0.1	1
89506	Nevada	Washoe County	0.1	1
94708	California	Alameda County	0.1	1
94920	California	Marin County	0.1	1
92660	California	Orange County	0.1	1
94087	California	Santa Clara County	0.1	1
66523	Kansas	Osage County	0.1	1
94063	California	San Mateo County	0.1	1
80523	Colorado	Larimer County	0.1	1
94037	California	San Mateo County	0.1	1
78247	Texas	Bexar County	0.1	1
95430	California	Sonoma County	0.1	1
94621	California	Alameda County	0.1	1
96126	California	Sierra County	0.1	1
91942	California	San Diego County	0.1	1
95001	California	Santa Cruz County	0.1	1
12065	New York	Saratoga County	0.1	1
94116	California	San Francisco County	0.1	1
89496	Nevada	Churchill County	0.1	1
84060	Utah	Summit County	0.1	1
06120	Connecticut	Hartford County	0.1	1
95111	California	Santa Clara County	0.1	1
94941	California	Marin County	0.1	1
94549	California	Contra Costa County	0.1	1
95841	California	Sacramento County	0.1	1
48069	Michigan	Oakland County	0.1	1

94952	California	Sonoma County	0.1	1
89501	Nevada	Washoe County	0.1	1
90803	California	Los Angeles County	0.1	1
96114	California	Lassen County	0.1	1
89407	Nevada	Churchill County	0.1	1
30052	Georgia	Walton County	0.1	1
94002	California	San Mateo County	0.1	1
94707	California	Alameda County	0.1	1
95613	California	El Dorado County	0.1	1
94571	California	Solano County	0.1	1
85395	Arizona	Maricopa County	0.1	1
53711	Wisconsin	Dane County	0.1	1
94560	California	Alameda County	0.1	1
30339	Georgia	Fulton County	0.1	1

* Includes respondents reporting no ZIP code or an invalid ZIP code .

APPENDIX B - Detailed Satisfaction Results

Table B-1. Satisfaction for Visits to Day Use Developed Sites

Satisfaction Element	Percent Rating Satisfaction as:					Mean Rating§	Mean Importance†	No. Obs‡
	Very Dissatisfied	Somewhat Dissatisfied	Neither Satisfied nor Dissatisfied	Somewhat Satisfied	Very Satisfied			
Restroom Cleanliness	2.0	4.2	7.3	22.5	63.9	4.4	4.0	64
Developed Facilities	0.0	3.8	5.6	41.6	49.0	4.4	4.2	80
Condition of Environment	1.7	2.2	6.1	22.0	68.1	4.5	4.8	90
Employee Helpfulness	0.0	2.0	4.0	13.3	80.6	4.7	4.6	53
Interpretive Displays	0.0	10.1	21.7	17.6	50.5	4.1	4.0	40
Parking Availability	0.4	0.3	5.6	17.9	75.9	4.7	4.2	89
Parking Lot Condition	0.0	3.6	9.4	30.7	56.3	4.4	4.0	89
Rec. Info. Availability	5.0	0.0	9.5	27.2	58.2	4.3	4.2	62
Road Condition	0.0	0.0	1.8	38.1	60.1	4.6	4.1	78
Feeling of Safety	3.4	0.0	6.8	10.9	78.8	4.6	4.2	89
Scenery	0.0	0.0	1.7	10.2	88.1	4.9	4.6	90
Signage Adequacy	0.6	0.0	7.6	35.0	56.8	4.5	3.9	86
Trail Condition	2.0	0.6	14.3	28.7	54.4	4.3	4.4	71
Value for Fee Paid	4.0	2.0	21.8	27.8	44.4	4.1	4.6	52

NOTE: The data was not reported for items with fewer than 10 responses. Satisfaction and Importance were asked as two separate questions so one of these may have 10 responses even though the other does not.

§ Scale: Very Dissatisfied = 1, Somewhat Dissatisfied = 2, Neither Satisfied nor Dissatisfied = 3, Somewhat Satisfied = 4, Very Satisfied = 5

† Scale: Not Important = 1, Somewhat Important = 2, Moderately Important = 3, Important = 4, Very Important = 5

‡ No. Obs is the number of survey respondents who responded to this item.

Table B-2. Satisfaction for Visits to Overnight Developed Sites

Satisfaction Element	Percent Rating Satisfaction as:					Mean Rating§	Mean Importance†	No. Obs‡
	Very Dissatisfied	Somewhat Dissatisfied	Neither Satisfied nor Dissatisfied	Somewhat Satisfied	Very Satisfied			
Restroom Cleanliness	5.6	0.0	9.7	35.3	49.4	4.2	4.2	24
Developed Facilities	0.0	0.0	0.0	25.8	74.1	4.7	4.2	26
Condition of Environment	0.0	0.0	0.8	44.3	54.8	4.5	4.7	28
Employee Helpfulness	0.0	0.0	13.2	13.2	73.6	4.6	4.6	12
Interpretive Displays	0.0	0.0	33.8	0.2	66.0	4.3	3.9	17
Parking Availability	0.0	0.0	0.0	8.8	91.2	4.9	4.2	25
Parking Lot Condition	0.0	0.0	0.0	26.3	73.7	4.7	3.6	19
Rec. Info. Availability	0.0	26.4	19.9	21.0	32.7	3.6	4.0	18
Road Condition	6.4	0.0	16.9	51.6	25.1	3.9	3.6	27
Feeling of Safety	0.0	0.0	12.9	7.8	79.3	4.7	4.4	28
Scenery	0.0	0.0	0.0	16.4	83.6	4.8	4.8	28
Signage Adequacy	0.0	15.6	5.9	24.2	54.3	4.2	4.2	28
Trail Condition	0.0	0.0	6.1	56.7	37.2	4.3	4.6	23
Value for Fee Paid	5.3	0.0	0.0	32.3	62.4	4.5	4.7	17

NOTE: The data was not reported for items with fewer than 10 responses. Satisfaction and Importance were asked as two separate questions so one of these may have 10 responses even though the other does not.

§ Scale: Very Dissatisfied = 1, Somewhat Dissatisfied = 2, Neither Satisfied nor Dissatisfied = 3, Somewhat Satisfied = 4, Very Satisfied = 5

† Scale: Not Important = 1, Somewhat Important = 2, Moderately Important = 3, Important = 4, Very Important = 5

‡ No. Obs is the number of survey respondents who responded to this item.

Table B-3. Satisfaction for Visits to Undeveloped Areas (GFAs)

Satisfaction Element	Percent Rating Satisfaction as:					Mean Rating§	Mean Importance†	No. Obs‡
	Very Dissatisfied	Somewhat Dissatisfied	Neither Satisfied nor Dissatisfied	Somewhat Satisfied	Very Satisfied			
Restroom Cleanliness	11.3	5.6	2.5	52.1	28.5	3.8	4.0	17
Developed Facilities	0.0	0.0	13.6	31.5	54.9	4.4	4.6	14
Condition of Environment	0.0	0.0	4.5	17.6	77.9	4.7	4.8	99
Employee Helpfulness								5
Interpretive Displays	0.0	5.4	38.8	19.6	36.3	3.9	3.8	47
Parking Availability	0.6	1.3	7.6	29.8	60.7	4.5	3.9	89
Parking Lot Condition	0.8	4.6	10.7	35.9	48.0	4.3	3.4	61
Rec. Info. Availability	0.0	6.8	24.2	24.5	44.5	4.1	4.1	55
Road Condition	2.6	7.0	8.3	32.8	49.2	4.2	3.9	89
Feeling of Safety	0.0	1.2	0.5	12.6	85.7	4.8	4.5	100
Scenery	0.0	0.0	1.2	10.6	88.2	4.9	4.8	100
Signage Adequacy	1.2	7.6	19.0	21.4	50.8	4.1	3.9	93
Trail Condition	0.0	3.5	2.1	31.8	62.6	4.5	4.6	81
Value for Fee Paid							4.6	9

NOTE: The data was not reported for items with fewer than 10 responses. Satisfaction and Importance were asked as two separate questions so one of these may have 10 responses even though the other does not.

§ Scale: Very Dissatisfied = 1, Somewhat Dissatisfied = 2, Neither Satisfied nor Dissatisfied = 3, Somewhat Satisfied = 4, Very Satisfied = 5

† Scale: Not Important = 1, Somewhat Important = 2, Moderately Important = 3, Important = 4, Very Important = 5

‡ No. Obs is the number of survey respondents who responded to this item.

Table B-4. Satisfaction for Visits to Designated Wilderness*

Satisfaction Element	Percent Rating Satisfaction as:					Mean Rating§	Mean Importance†	No. Obs‡
	Very Dissatisfied	Somewhat Dissatisfied	Neither Satisfied nor Dissatisfied	Somewhat Satisfied	Very Satisfied			
Restroom Cleanliness								1
Developed Facilities								2
Condition of Environment	0.0	2.0	4.1	15.8	78.1	4.7	4.9	59
Employee Helpfulness								0
Interpretive Displays	1.9	7.2	40.2	15.5	35.2	3.7	3.5	45
Parking Availability	0.0	2.9	8.0	32.1	57.0	4.4	4.1	57
Parking Lot Condition	0.0	0.0	17.5	35.1	47.4	4.3	3.9	23
Rec. Info. Availability	0.0	12.8	16.3	21.8	49.2	4.1	4.3	51
Road Condition	0.0	0.0	10.9	37.6	51.6	4.4	4.2	48
Feeling of Safety	0.0	0.0	2.1	8.5	89.5	4.9	4.4	58
Scenery	0.0	0.0	2.0	7.5	90.5	4.9	4.9	59
Signage Adequacy	5.6	17.8	24.6	23.0	29.1	3.5	4.1	58
Trail Condition	0.0	0.0	6.4	18.0	75.6	4.7	4.6	58
Value for Fee Paid								1

NOTE: The data was not reported for items with fewer than 10 responses. Satisfaction and Importance were asked as two separate questions so one of these may have 10 responses even though the other does not.

§ Scale: Very Dissatisfied = 1, Somewhat Dissatisfied = 2, Neither Satisfied nor Dissatisfied = 3, Somewhat Satisfied = 4, Very Satisfied = 5

† Scale: Not Important = 1, Somewhat Important = 2, Moderately Important = 3, Important = 4, Very Important = 5

‡ No. Obs is the number of survey respondents who responded to this item.

* Data supplied is for all Designated Wilderness on the forest combined. Data was not collected for satisfaction for each individual Wilderness on the forest.