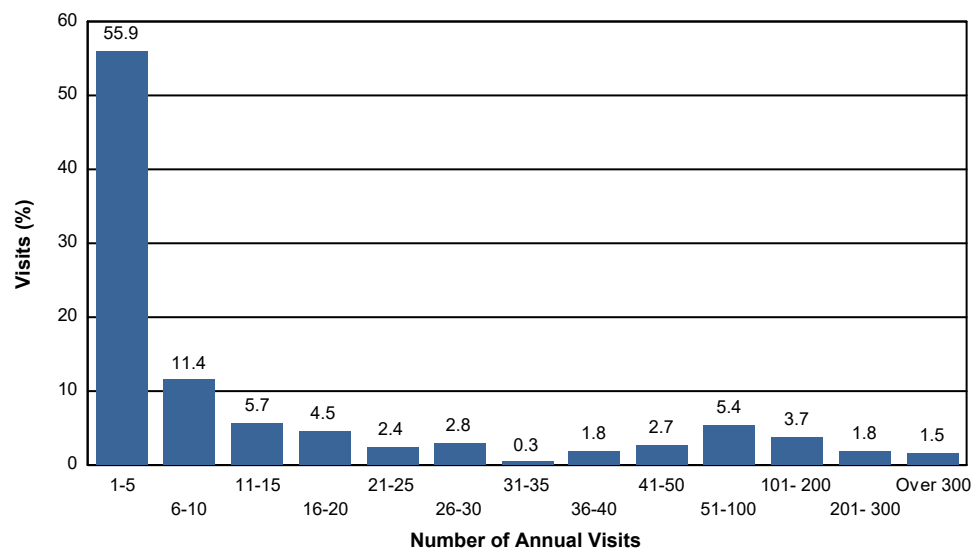


Annual Visit Frequency

Percent of National Forest Visits* by Annual Visit Frequency

Number of Annual Visits	Visits (%)†	Cumulative Visits (%)
1 - 5	55.9	55.9
6 - 10	11.4	67.3
11 - 15	5.7	73.0
16 - 20	4.5	77.5
21 - 25	2.4	80.0
26 - 30	2.8	82.8
31 - 35	0.3	83.1
36 - 40	1.8	84.9
41 - 50	2.7	87.6
51 - 100	5.4	93.0
101 - 200	3.7	96.7
201 - 300	1.8	98.5
Over 300	1.5	100.0



Selected Regions:

Pacific Southwest Region (R5) (FY 2015, FY 2016, FY 2017, FY 2018, FY 2019)

* A National Forest Visit is defined as the entry of one person upon a national forest to participate in recreation activities for an unspecified period of time. A National Forest Visit can be composed of multiple Site Visits.

† The first row indicates the percent of National Forest Visits made by persons who visit 1 to 5 times per year. The last row indicates the percent of National Forest Visits made by persons who visit more than 300 times per year.