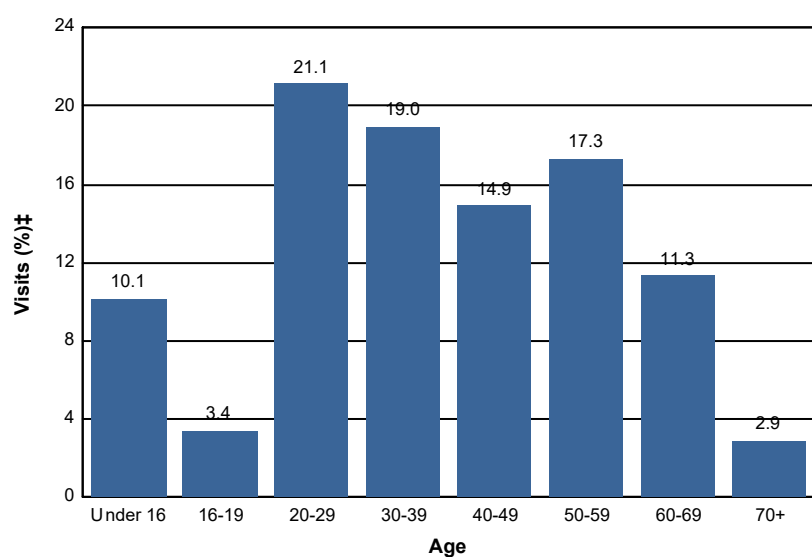


## Age - Wilderness

### Percent of Wilderness Site Visits\* by Age

Age Class	Wilderness Site Visits (%)‡
Under 16	10.1
16-19	3.4
20-29	21.1
30-39	19.0
40-49	14.9
50-59	17.3
60-69	11.3
70+	2.9
<b>Total</b>	<b>100.0</b>



#### Selected Regions:

Pacific Southwest Region (R5) (FY 2015, FY 2016, FY 2017, FY 2018, FY 2019)

\* A Site Visit is the entry of one person onto a National Forest site or area to participate in recreation activities for an unspecified period of time.

† Non-respondents to age questions were excluded from analysis.

‡ Calculations are computed using weights that expand the sample of individuals to the population of Wilderness Site Visits.