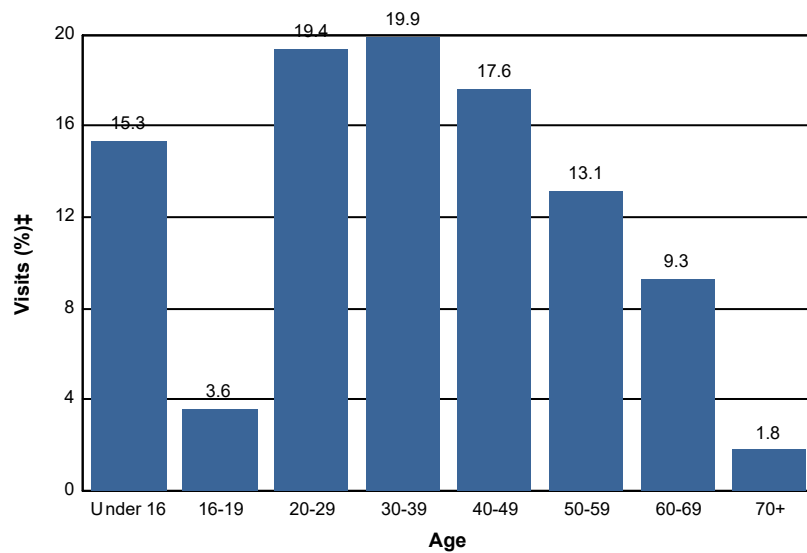


Age - Wilderness

Percent of Wilderness Site Visits* by Age

Age Class	Wilderness Site Visits (%)‡
Under 16	15.3
16-19	3.6
20-29	19.4
30-39	19.9
40-49	17.6
50-59	13.1
60-69	9.3
70+	1.8
Total	100.0



Selected Regions:
Intermountain Region (R4) (FY 2010, FY 2011, FY 2012, FY 2014, FY 2018)

* A Site Visit is the entry of one person onto a National Forest site or area to participate in recreation activities for an unspecified period of time.

† Non-respondents to age questions were excluded from analysis.

‡ Calculations are computed using weights that expand the sample of individuals to the population of Wilderness Site Visits.