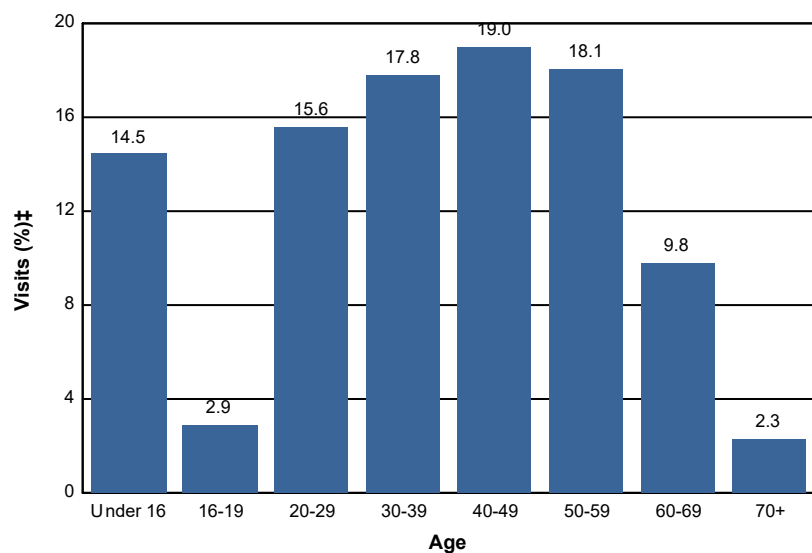


Age - Wilderness

Percent of Wilderness Site Visits* by Age

| Age Class | Wilderness Site Visits (%)‡ |
|--------------|-----------------------------|
| Under 16 | 14.5 |
| 16-19 | 2.9 |
| 20-29 | 15.6 |
| 30-39 | 17.8 |
| 40-49 | 19.0 |
| 50-59 | 18.1 |
| 60-69 | 9.8 |
| 70+ | 2.3 |
| Total | 100.0 |



| Selected Regions: |
|--|
| Northern Region (R1) (FY 2005, FY 2006, FY 2007, FY 2008, FY 2009) |
| Rocky Mountain Region (R2) (FY 2005, FY 2006, FY 2007, FY 2008, FY 2009) |

* A Site Visit is the entry of one person onto a National Forest site or area to participate in recreation activities for an unspecified period of time.

† Non-respondents to age questions were excluded from analysis.

‡ Calculations are computed using weights that expand the sample of individuals to the population of Wilderness Site Visits.