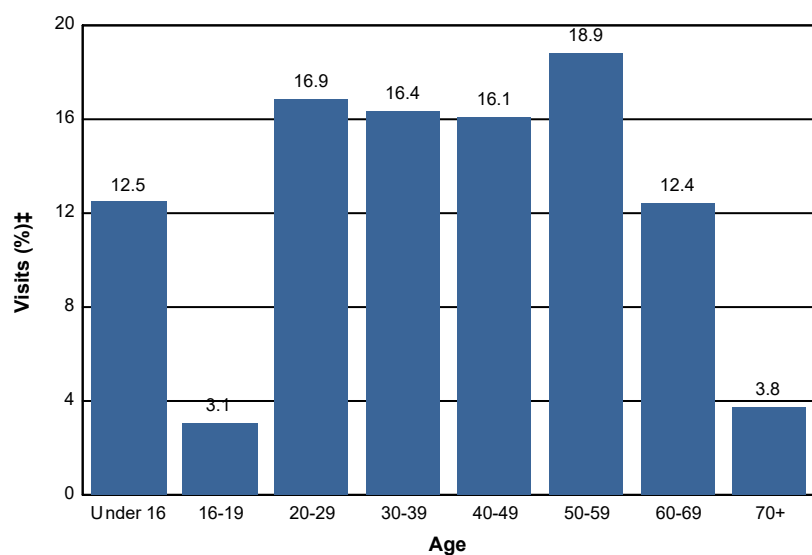


## Age - Wilderness

### Percent of Wilderness Site Visits\* by Age

Age Class	Wilderness Site Visits (%)‡
Under 16	12.5
16-19	3.1
20-29	16.9
30-39	16.4
40-49	16.1
50-59	18.9
60-69	12.4
70+	3.8
<b>Total</b>	<b>100.1</b>



#### Selected Regions:

Northern Region (R1) (FY 2010, FY 2011, FY 2012, FY 2014, FY 2018)  
 Rocky Mountain Region (R2) (FY 2010, FY 2011, FY 2012, FY 2014, FY 2018)  
 Southwest Region (R3) (FY 2010, FY 2011, FY 2012, FY 2013, FY 2014, FY 2018)  
 Intermountain Region (R4) (FY 2010, FY 2011, FY 2012, FY 2014, FY 2018)  
 Pacific Southwest Region (R5) (FY 2010, FY 2011, FY 2012, FY 2014, FY 2018)  
 Pacific Northwest Region (R6) (FY 2010, FY 2011, FY 2012, FY 2014, FY 2018)  
 Southern Region (R8) (FY 2010, FY 2011, FY 2012, FY 2014, FY 2018)  
 Eastern Region (R9) (FY 2010, FY 2011, FY 2012, FY 2014, FY 2018)  
 Alaska Region (R10) (FY 2010, FY 2011, FY 2012, FY 2014, FY 2018)

\* A Site Visit is the entry of one person onto a National Forest site or area to participate in recreation activities for an unspecified period of time.

† Non-respondents to age questions were excluded from analysis.

‡ Calculations are computed using weights that expand the sample of individuals to the population of Wilderness Site Visits.