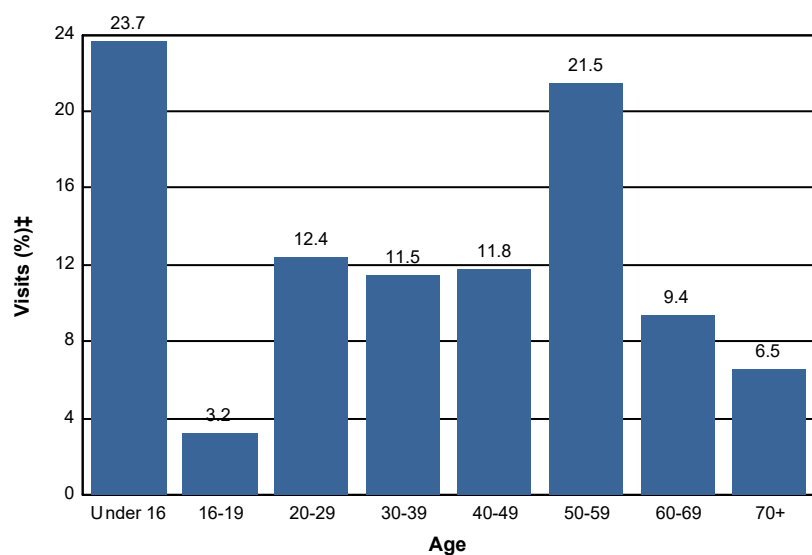


# Age

## Percent of National Forest Visits\* by Age

Age Class	National Forest Visits (%)‡
Under 16	23.7
16-19	3.2
20-29	12.4
30-39	11.5
40-49	11.8
50-59	21.5
60-69	9.4
70+	6.5
<b>Total</b>	<b>100.0</b>



Selected Forests:
Midewin National Tallgrass Prairie (FY 2018)

\* A National Forest Visit is defined as the entry of one person upon a national forest to participate in recreation activities for an unspecified period of time. A National Forest Visit can be composed of multiple Site Visits.

† Non-respondents to age questions were excluded from analysis.

‡ Calculations are computed using weights that expand the sample of individuals to the population of National Forest Visits.