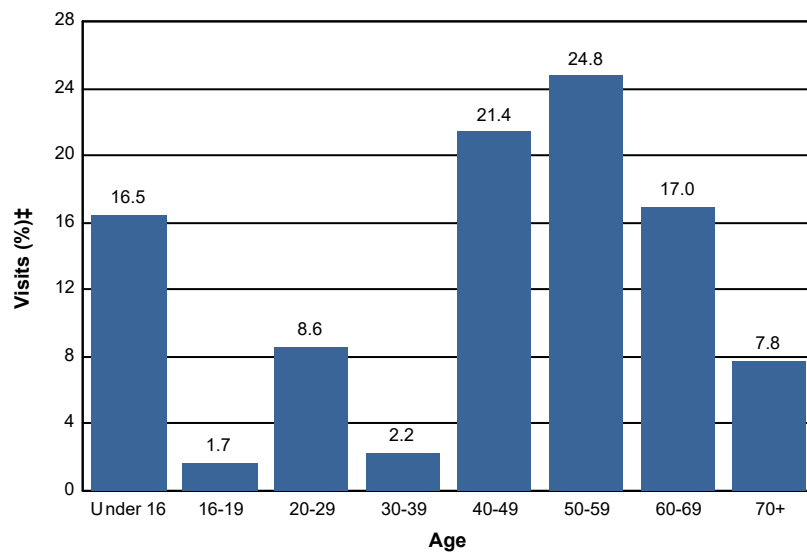


Age - Wilderness

Percent of Wilderness Site Visits* by Age

Age Class	Wilderness Site Visits (%)‡
Under 16	16.5
16-19	1.7
20-29	8.6
30-39	2.2
40-49	21.4
50-59	24.8
60-69	17.0
70+	7.8
Total	100.0



Selected Forests:

Superior NF (FY 2016)

* A Site Visit is the entry of one person onto a National Forest site or area to participate in recreation activities for an unspecified period of time.

† Non-respondents to age questions were excluded from analysis.

‡ Calculations are computed using weights that expand the sample of individuals to the population of Wilderness Site Visits.