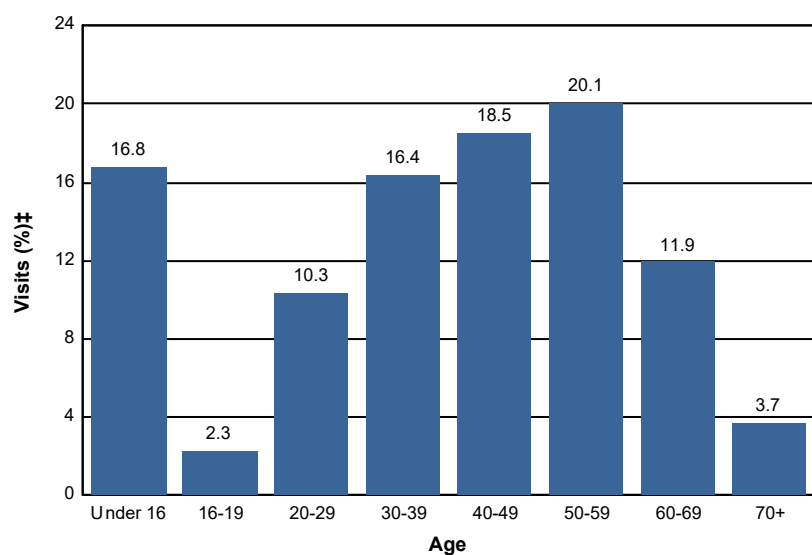


Age

Percent of National Forest Visits* by Age

Age Class	National Forest Visits (%)‡
Under 16	16.8
16-19	2.3
20-29	10.3
30-39	16.4
40-49	18.5
50-59	20.1
60-69	11.9
70+	3.7
Total	100.0



Selected Forests:

Chattahoochee-Oconee NF (FY 2014)

* A National Forest Visit is defined as the entry of one person upon a national forest to participate in recreation activities for an unspecified period of time. A National Forest Visit can be composed of multiple Site Visits.

† Non-respondents to age questions were excluded from analysis.

‡ Calculations are computed using weights that expand the sample of individuals to the population of National Forest Visits.