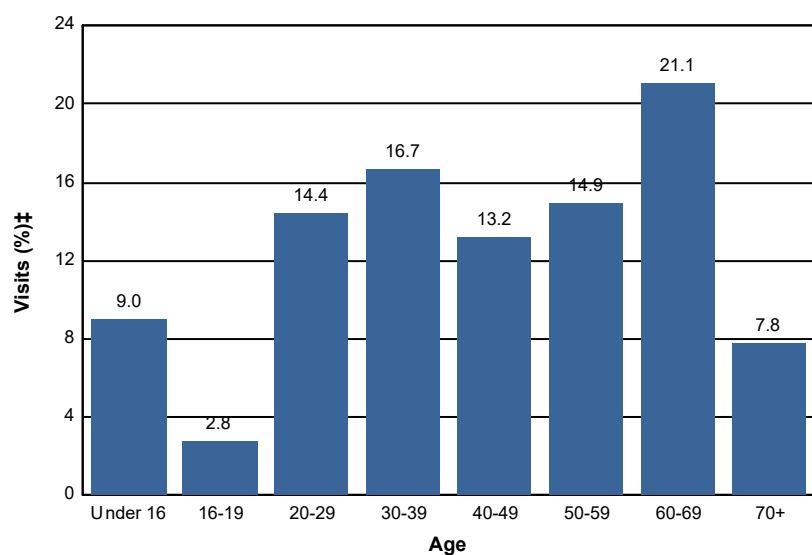


## Age - Wilderness

### Percent of Wilderness Site Visits\* by Age

Age Class	Wilderness Site Visits (%)‡
Under 16	9.0
16-19	2.8
20-29	14.4
30-39	16.7
40-49	13.2
50-59	14.9
60-69	21.1
70+	7.8
<b>Total</b>	<b>99.9</b>



#### Selected Forests:

Tonto NF (FY 2016)

\* A Site Visit is the entry of one person onto a National Forest site or area to participate in recreation activities for an unspecified period of time.

† Non-respondents to age questions were excluded from analysis.

‡ Calculations are computed using weights that expand the sample of individuals to the population of Wilderness Site Visits.