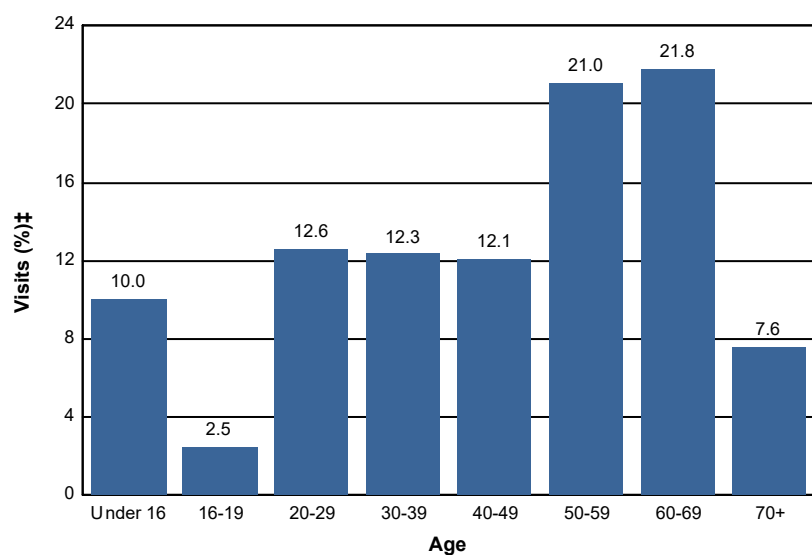


# Age

## Percent of National Forest Visits\* by Age

Age Class	National Forest Visits (%)‡
Under 16	10.0
16-19	2.5
20-29	12.6
30-39	12.3
40-49	12.1
50-59	21.0
60-69	21.8
70+	7.6
<b>Total</b>	<b>99.9</b>



### Selected Forests:

Coconino NF (FY 2015)

\* A National Forest Visit is defined as the entry of one person upon a national forest to participate in recreation activities for an unspecified period of time. A National Forest Visit can be composed of multiple Site Visits.

† Non-respondents to age questions were excluded from analysis.

‡ Calculations are computed using weights that expand the sample of individuals to the population of National Forest Visits.