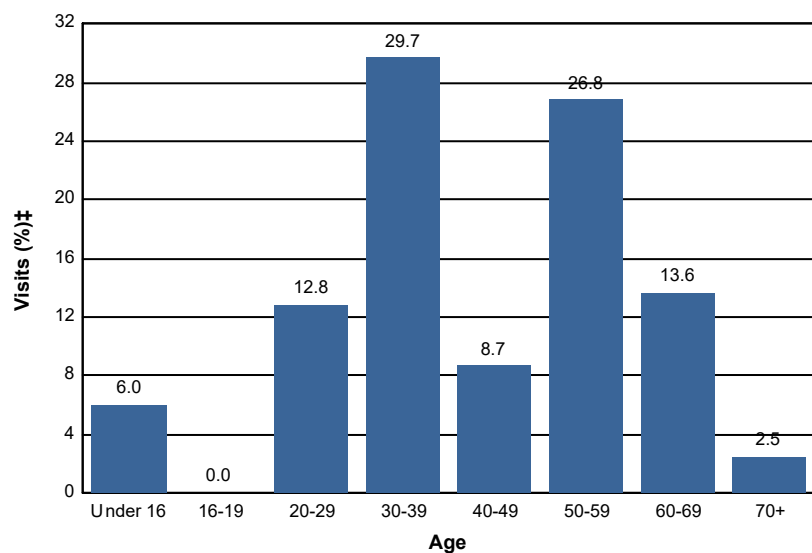


Age - Wilderness

Percent of Wilderness Site Visits* by Age

Age Class	Wilderness Site Visits (%)‡
Under 16	6.0
16-19	0.0
20-29	12.8
30-39	29.7
40-49	8.7
50-59	26.8
60-69	13.6
70+	2.5
Total	100.1



Selected Forests:
Flathead NF (FY 2015)

* A Site Visit is the entry of one person onto a National Forest site or area to participate in recreation activities for an unspecified period of time.

† Non-respondents to age questions were excluded from analysis.

‡ Calculations are computed using weights that expand the sample of individuals to the population of Wilderness Site Visits.