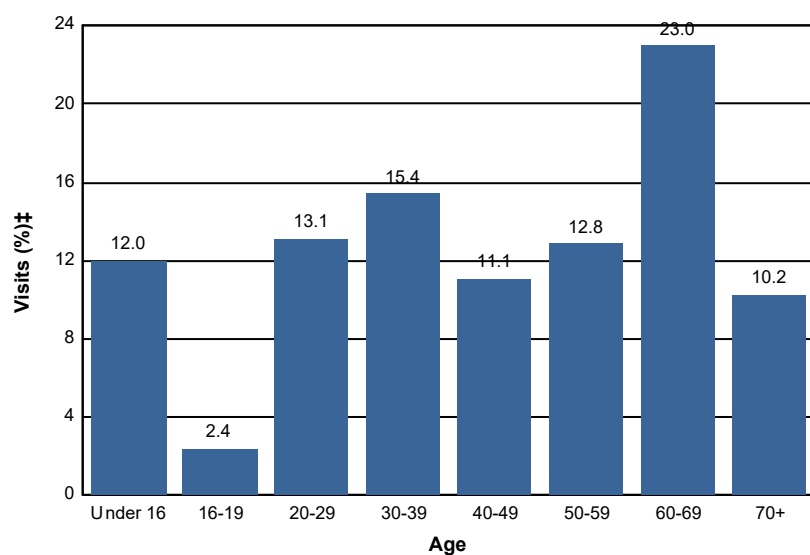


# Age

## Percent of National Forest Visits\* by Age

Age Class	National Forest Visits (%)‡
Under 16	12.0
16-19	2.4
20-29	13.1
30-39	15.4
40-49	11.1
50-59	12.8
60-69	23.0
70+	10.2
<b>Total</b>	<b>100.0</b>



### Selected Forests:

Bitterroot NF (FY 2017)

\* A National Forest Visit is defined as the entry of one person upon a national forest to participate in recreation activities for an unspecified period of time. A National Forest Visit can be composed of multiple Site Visits.

† Non-respondents to age questions were excluded from analysis.

‡ Calculations are computed using weights that expand the sample of individuals to the population of National Forest Visits.