

# Landscape Scale Restoration Project Report



**Project Name:** ADA WILDFIRE RISK MAP

**Funding Year:** 2015

## Stakeholders

Forest Service Region: USDA Forest Service - R1

Sponsoring Organization: Idaho Dept. of Lands

State Project Contact: TYRE HOLFELTZ | 208-666-8653 | tholfeltz@idl.idaho.gov

Participating Organizations:

Grantee: Idaho Dept. of Lands

## Project Funding

Agreement(s): 15-DG-11010000-010

## Project Design

### Project Purpose

The City of Boise and Ada County have the state's highest population density and when coupled with high wildfire risk, the project area has a high loss potential to people and property. Project partners will complete a detailed risk assessment and create a wildfire risk map with robust interactive software to guide long-term initiatives to mitigate wildfire threats to lives, properties and the environment, and increase public awareness. Fuels will be treated on 300 acres in highest-risk areas.

# Landscape Scale Restoration Project Report



## National Themes & Outcomes

### **Conserving and Managing Working Forest Landscapes**

- High priority forest ecosystems and landscapes are identified and conserved.

### **Protect Forests from Threats**

- Fire-adapted lands are restored and risk of wildfire impacts is reduced.
- Threats to forest and ecosystem health are identified, managed and reduced.

### **Enhance Public Benefits from Private Forests**

- Communities plan for and reduce their risks from wildfire.

## Strategic Issues

With a population of over 400,000 residents, the Boise area is the largest population center in Idaho and is impacted on an annual basis by wildfire. There are many impacts that occur when wildfires burn in this area that include economic (infrastructure impacts, recreational, water, etc.) and environmental (habitat loss, native vegetation destroyed, landslides, debris flows, etc.).

## Collaboration & Partners

Primary project partners include: Boise Fire will provide technical expertise, planning services, project coordination and facilitation; Ada County will provide project implementation, coordination, and planning services; Boise State University will provide project planning services, coordination, technical advice, and data analysis.

## Integrated Delivery

Partners (five cities, Boise State University and Ada County) will work together to collect and synthesize data, develop and maintain a website, provide education outreach, and through this project identify cost efficiencies.

## Influence on Positive Change

The project will enhance cooperative working relationships of county and city emergency response agencies and will significantly improve the wildfire hazard base-map for the County. Additionally, the project will provide very important data for informing and educating property owners, prioritizing hazardous fuels reduction treatments, and response to local incidents.

# Landscape Scale Restoration Project Report



## Accomplishments

### Deliverables

- .High-resolution remote sensing data (LiDAR) and GIS layers with relevant wildfire risk factors; includes alluvial fans for establishment of fire return interval, slope stability, building age, construction material, landscaping and accessibility
- .Detailed wildfire risk maps to direct and prioritize future mitigation and operational activities
- .Wildfire risk ranking categories, approved by local fire authorities for the built environment
- .Mobile app for home wildfire risk assessments
- .Interactive web portal to determine relative wildfire risk on properties
- .8,500 printed media to market web portal and fire prevention awareness
- .Presentations to Fire Adapted Communities (FAC) Learning Network and local/national conferences and workshops
- .Boise and partners maintain website and provide updates
- .300 high-risk acres treated for wildfire mitigation

### Accomplishments to Date

- 2016: Boise Fire Department worked with a contractor to develop an on-line, password protected system that can be used to identify risks, manage response and allocate resources. The system is currently being field tested to identify issues and take corrective steps.
- 2017: Boise Fire Department has completed and are beta testing the risk and asset portal and have begun limited education outreach to a few targeted communities.
- 2018: Boise Fire Department and their contractor completed the development of the portal and have begun to populate the portal with wildfire risk evaluations.
- 2019: Approximately 50 wildfire risk evaluations were completed and populated within the portal. Boise FD also developed and aired a PSA inviting Boise residents to view their modeled wildfire risk within the portal and have an evaluation completed on their property.
- 2020: Used social media sites to advertise wildfire risk evaluations by Boise FD. 200 wildfire risk evaluations were completed and populated within the portal. Boise FD purchased and distributed educational items to support wildfire risk evaluation participation. Presented project at IAWF Summit in Nashville, NC.

### Deliverables in Progress

2019: Additional home wildfire risk evaluations will be completed and populated into the portal.

2020: All project deliverables are complete

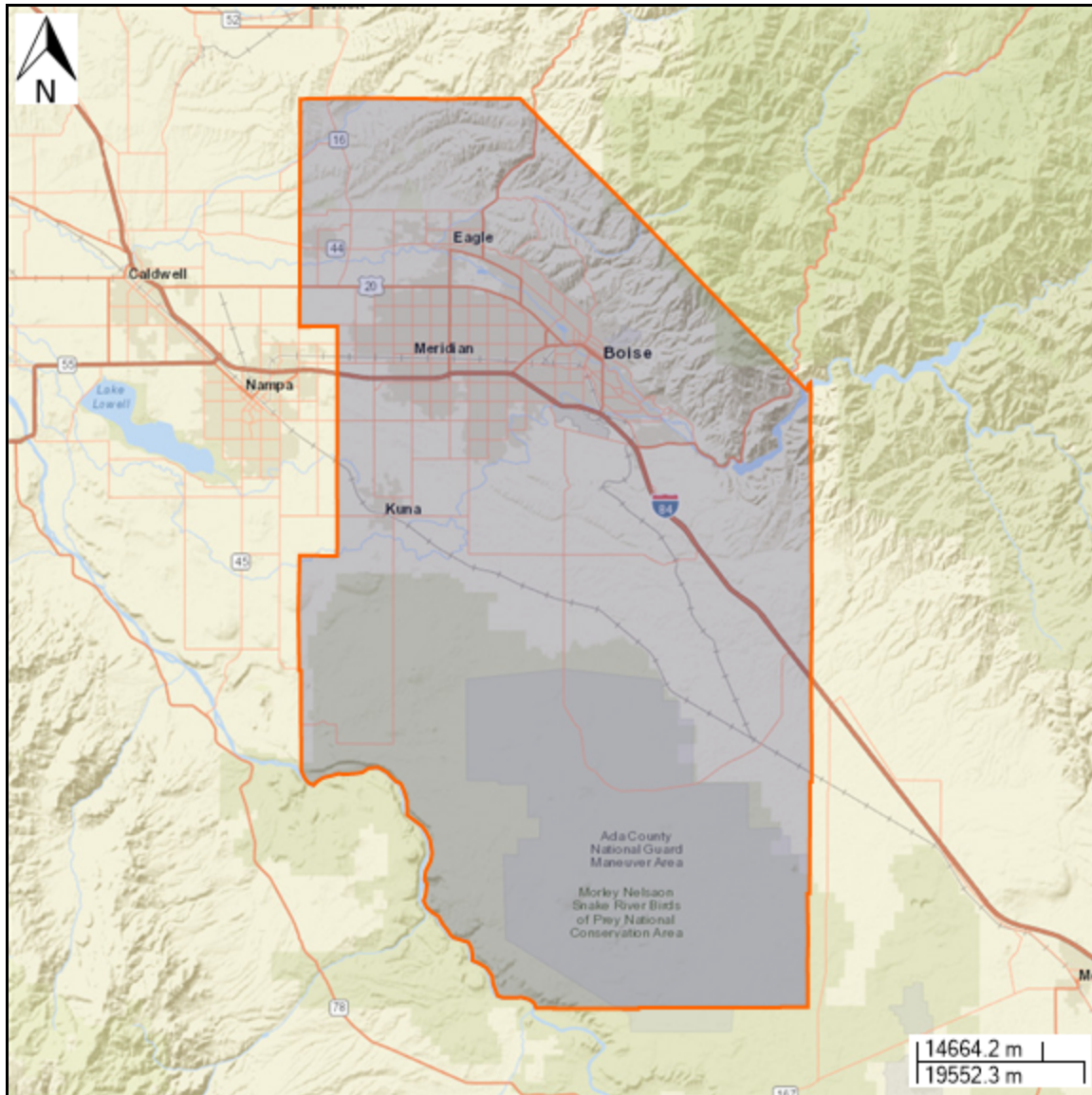
### Challenges

2019: There was much less interest than anticipated from the public to have wildfire risk evaluations completed.

# Landscape Scale Restoration Project Report



## Impact Area



**Information Last Updated**  
1/12/2021