

LandMark Mobile NRS-FIA GPS Setup Guide for the Juniper Allegro 2

October 2016



1. This is the Allegro 2 home screen. On a new (out of the box) or used Juniper 2, the Bluetooth icon may be grayed out.



2. Tap the Bluetooth icon to turn "On". The icon will turn green and display as "Discoverable". A Bluetooth icon is also added to the top status bar.



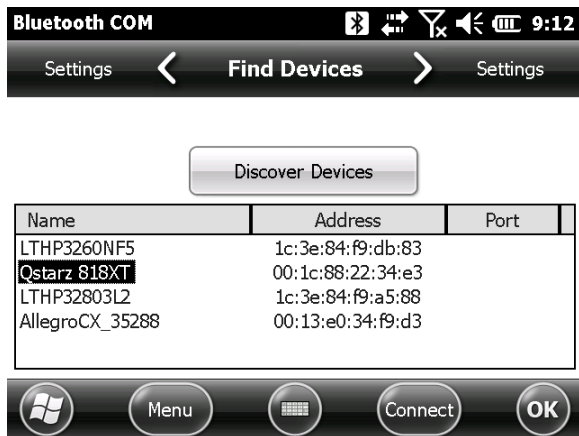
3. Tap the settings cog icon in the right sidebar. This opens the Settings window.
4. Tap the Connections icon. This opens the Connections window.



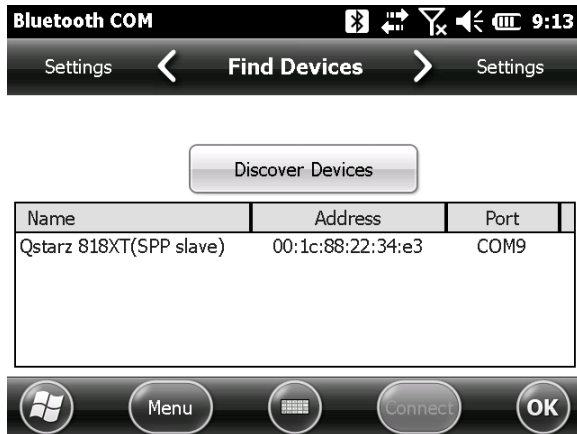
5. Tap the Bluetooth COM 10101 icon.



6. Turn on the Qstarz GPS receiver to the 1Hz switch position. Tap the “Discover Devices” button on the Allegro 2. All Bluetooth devices (laptops, mobile phones, GPS receivers, etc.) in the area may be discovered. If more than one Bluetooth device is discovered, you will need to tap the “Qstarz 818XT” to highlight the GPS device. Tap “Connect”. Otherwise, it will automatically connect the Qstarz 818XT device.



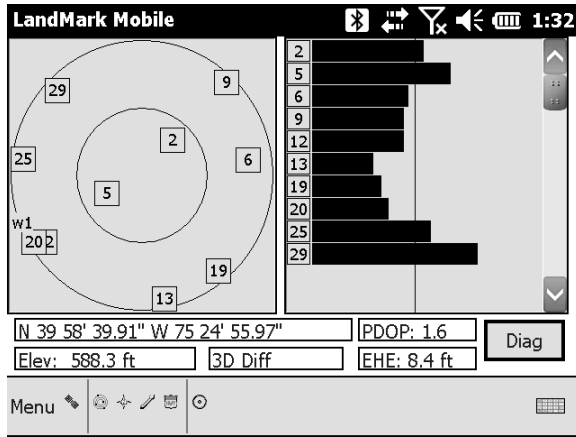
7. The Allegro 2 will perform an “Automatic Pin Discovery: Trying 0000”. It should automatically bond and display the Qstarz 818XT GPS receiver and assign COM9.



8. On new Allegro 2's, installation of the LandMark Mobile GPS software, an updated Im.ini and WMM.cof files will be done by Jeff Wazenegger in St. Paul.
9. **On Allegro 2's being converted from internal GPS to the Qstarz external GPS receiver, you will need to obtain the updated Im.ini file from Jeff Wazenegger** and copy to the Allegro 2 Program Files/Landmark Mobile directory. The updated Im.ini file allows LandMark Mobile to communicate with the Bluetooth Qstarz GPS receiver through COM9.
10. Start LandMark Mobile from the Juniper 2 home screen right sidebar.



11. Within a few seconds, you should see the GPS data being displayed.



Questions? Contact Jeff Wazenegger (651-649-5143) or Richard McCullough (610-557-4081).